



Advance
FLUID CONTROL



LUBRICATION & WORKSHOP EQUIPMENT

Version 4.1

INTRODUCTION

Overview

Advance Fluid Control is a family owned and operated company, built on experience and values that ensure we respect and support our clients with growing their business.

Our innovative and agile team is resourceful and adaptable. Their motivation is driven by a continual desire to provide efficient, turn-key solutions customised to exceed our clients expectations.

We believe client satisfaction is paramount and is achieved through our extensive stock holdings, excellent customer service and technical capabilities which are at the core of what we do. **Client satisfaction inspires our team to succeed.**

Solutions We Provide

- System design
- Equipment supply
- Installation options
- Project management
- System support and maintenance

Scenarios we solve

- Resolving flow issues in existing transfer and dispensing systems
- Providing semi-automated dispensing systems to increase accountability, accuracy and efficiency
- Providing tank level monitoring, automated alerts and overflow protection
- Turnkey solutions for new workshop fluid and air distribution systems
- Modification and additions to existing workshop systems
- Solving challenges around mobile and field dispensing applications
- Extending plant bearing life and reducing downtime caused by inadequate lubrication
- Plus many others - discuss your application with us!

Why Choose AFC?

- ✓ Solutions driven
- ✓ Custom designs
- ✓ Exceptional support
- ✓ Extensive industry experience
- ✓ National network
- ✓ Wide product range



Industries We Support

- ✓ Automotive workshops
- ✓ Truck & bus workshops
- ✓ Mining & earthmoving
- ✓ Agriculture
- ✓ Forestry
- ✓ Industrial plants
- ✓ Oil companies
- ✓ Food processing plants
- ✓ Bottling plants
- ✓ Sawmills
- ✓ Packaging manufacturing
- ✓ Plastic manufacturing



Locations

Nelson

11 Venice Place
Stoke
Nelson
0800538058
035474957

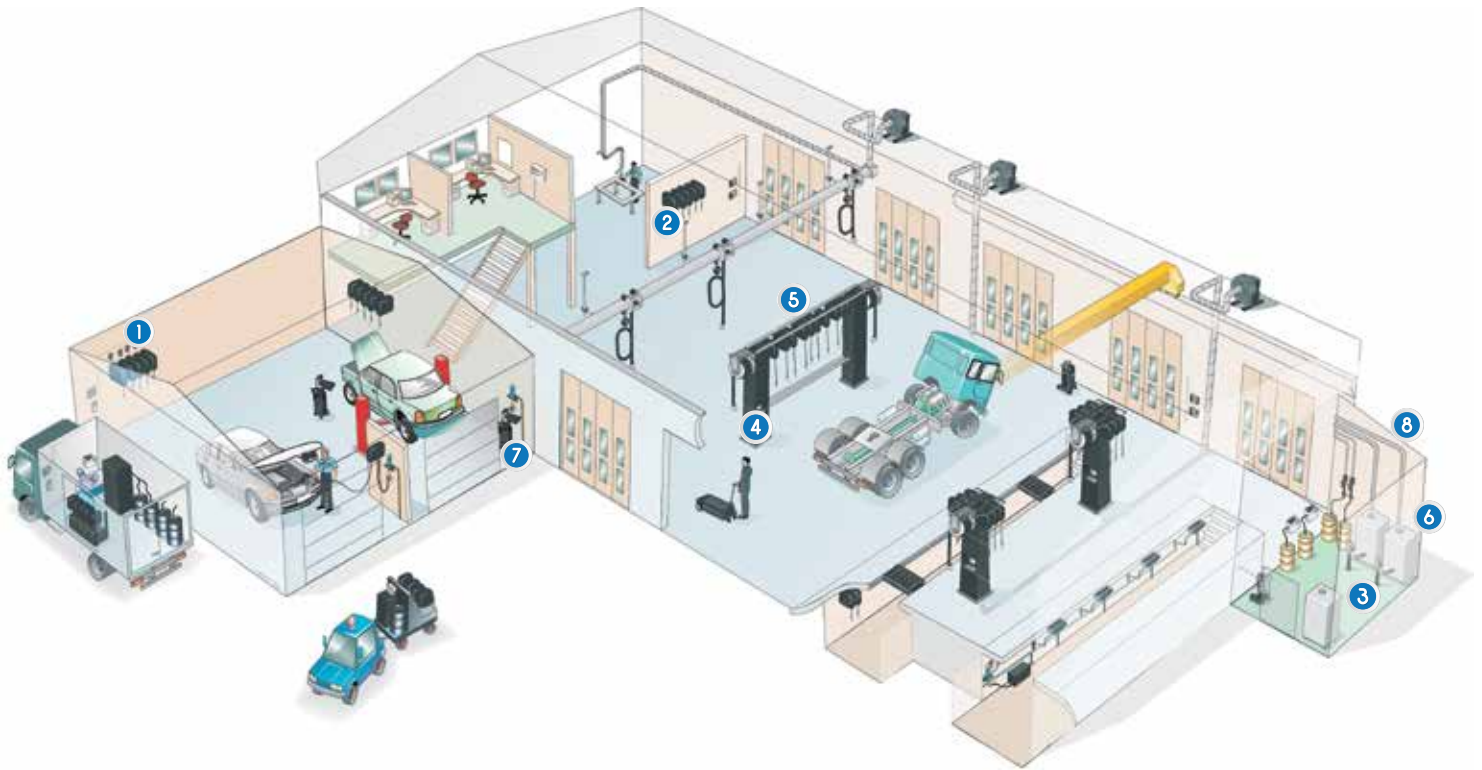
Auckland

Wiri
Auckland
0800538058
093203950

-  Head Office
-  Service
-  Distribution Centre



Workshop Fitouts



Pneumatic Grease Pump - Sublinox 100740

1 Hose Reels

Highest quality reels to ensure fluid is distributed accurately and effectively for a wide range of fluid grades



2 Oil Control Gun

Accurate dispensing of fluid is vital to any workshop and can be achieved through oil control guns. We ensure that we specify guns, metered or non-metered, that suits your application



3 Pumps

Pneumatic pumps use air to move or transfer fluid. A centrally located compressor is used to power cylinders, motors, and other pneumatic devices, including pumps. These systems are often controlled through either a manual or automatic solenoid valve and can provide a more flexible, lower cost, and safer alternative to electric or gas-powered motors. The system is dependent on the pumping operation, meaning that pump uptime is vital



4 Fluid Management Systems

Professionalism in workshop fluid dispensing starts here, with this system offering accountability, traceability, and accuracy. Although primarily used for oil and coolant management, it also caters for windshield fluid and many other fluids in different applications. Human error can be further eliminated by automatic data entry of dispense data to the Data Management System. Our Fluid Management Systems are globally acclaimed and include the Badger Meter Wireless System and the Orilink System by Orion



5 Hose Reels Gantries

Custom-built hose reel gantries for specified oil grades add engineering professionalism to any workshop design, ensuring that custom solutions are provided for any applications across all industries



6 Tanks

Double skinned oil storage tank range has set the international benchmark for best practice oil storage, both in safety and usability.



7 Waste Oil Equipment

Waste oil drainers are usually used in workshops to ensure a safe and clean method of removing waste oil. Pumps specifically designed for waste oil transfer from the workshop to storage tanks in large installations where there are long pumping distances. This is usually achieved by pumping via a double diaphragm or air-operated piston pump.



8 Pipework

An essential component of any workshop install, we follow careful steps to ensure that the piping system is the correct sizing for the application. The Pressfit pipework system is the ideal solution for installing stainless steel or carbon steel piping. Pressfitted pipe joints, secured with specially designed brackets, are cheap and risk-free.



Workshop Fitouts

Fitouts for Workshops throughout New Zealand

Advance Fluid Control carries out installations of fluid and dispensing systems in new and existing workshops throughout New Zealand. Our team has the capabilities to carry out multiple installations simultaneously in different locations. Each installation is carried out to the specific needs and requirements to suit the nature of operations on each site.

We carry out installations at car dealerships and other automotive workshops, truck and bus workshops, heavy industrial machinery workshops and agricultural workshops.

AFC offers so much more than just workshop equipment; some of these solutions are:

- Water distribution systems to vehicle bays and work stations, with associated reels and nozzles
- Compressed air equipment and piping to required locations through workshop
- Distribution and dispensing systems for coolant and windshield fluids
- Exhaust gas extraction systems for maintaining a health environment in the workshop
- Workshop cabinetry and bench systems with integrated dispensing equipment
- Adblue dispensing systems
- Pre-fabricated steel service pits
- Heavy duty air-operated pit jacks for heavy commercial vehicles
- Pit covers to remove the hazard of open service pits when not in use
- IT based fluid dispensing systems including integration to the site DMS
- Plus many other customised systems & products to suit individual requirements



OIL EQUIPMENT

1

GREASE EQUIPMENT

68

FUEL & ADBLUE EQUIPMENT

101

TANKS & BUNDING

116

DRUM HANDLING & SPILL RESPONSE

123

AIR & WATER EQUIPMENT

128

FLUID MANAGEMENT SYSTEMS

133

RETRACTABLE HOSE REELS

136



OIL EQUIPMENT



Mobile Oil Dispensing Kits	1
Stationary Oil Dispensing Kits	7
Oil Bars	14
Pneumatic Oil Pumps	16
Double Diaphragm Pumps	24
Electric Oil Pumps	27
Oil Dispensing Reels	29
Dispensing Guns & Meters	34
Oil Hand Pumps	43
Waste Oil Drainers	49
Clean Oil Tanks	55
Waste Oil Tanks & Pumping	56
Oil Equipment Accessories	62

3 Wheel Trolley Kits



Compact and robust 3 wheel mobile oil dispensing kits for 200-210L drums. These kits enable easy portability and are popular choices for automotive and light commercial workshops.

The pneumatic front wheels enable easier movement over uneven ground such as rough workshop floors and asphalt surfaces outside workshops.

- Digital oil meter gun (21006L) - 0.5% accuracy
- Pneumatic front wheels & braked swivel wheel
- Standard duty kit

Recommended for use with these pumps, a MP10-FRL-AD air filter regulator lubricator to protect pump internals from damage



Alternative Meter Gun:
Lube Pro Preset (21013L)



Add -LP onto kit part numbers



Item No:	23231L	23232L	23230L
Suits Drum/Container Size	200-210L	200-210L	200-210L
Compression Ratio:	3:1	5:1	5:1
Air Inlet Pressure:	5-8bar / 70-115psi	5-8bar / 70-115psi	5-8bar / 70-115psi
Pump Max Output Pressure:	24bar / 350psi	40bar / 580psi	40bar / 580psi
Pump Max Free Flow Rate:	12L/min	14L/min	14L/min
Trolley Type:	3 Wheel (3WDT220)	3 Wheel (3WDT220)	3 Wheel (3WDT220)
Hose Size & Length:	1/2" x 4m	1/2" x 4m	1/2" x 15m Reel
Components:	3 Wheel Trolley, 3:1 Pump, Connector Hose, 4m Hose, Digital Meter Gun	3 Wheel Trolley, 5:1 Pump, Connector Hose, 4m Hose, Digital Meter Gun	3 Wheel Trolley, 5:1 Pump, Connector Hose, 15m Reel, Digital Meter Gun

3 Wheel Trolley Kits - Meclube



Premium quality 3 wheel mobile oil dispensing kits for 200-210L drums. The 3 wheel trolley offers a compact and highly manoeuvrable dispensing unit which suits commercial workshop applications.

The pneumatic front wheels enable easier movement over uneven ground such as rough workshop floors and asphalt surfaces outside workshops.

- Digital oil meter gun (21006) - 0.5% accuracy
- Pneumatic front wheels & braked swivel wheel
- Heavy duty kit

Recommended for use with these pumps, a MP10-FRL-AD air filter regulator lubricator to protect pump internals from damage



Alternative Meter Gun:
Badger Preset (21013BA)



Add -BP onto kit part numbers



Item No:	23231M	23232M	23230M
Suits Drum/Container Size	200-210L	200-210L	200-210L
Compression Ratio:	3:1	5:1	5:1
Air Inlet Pressure:	6-8bar / 85-115psi	6-8bar / 85-115psi	6-8bar / 85-115psi
Pump Max Output Pressure:	24bar / 350psi	40bar / 580psi	40bar / 580psi
Pump Max Free Flow Rate:	20L/min	28L/min	28L/min
Trolley Type:	3 Wheel (3WDT220)	3 Wheel (3WDT220)	3 Wheel (3WDT220)
Hose Size & Length:	1/2" x 4m	1/2" x 4m	1/2" x 15m Reel
Components:	3 Wheel Trolley, 3:1 Pump, Connector Hose, 4m Hose Digital Meter Gun	3 Wheel Trolley, 5:1 Pump, Connector Hose, 4m Hose Digital Meter Gun	3 Wheel Trolley, 5:1 Pump, Connector Hose, 15m Reel Digital Meter Gun

4 Wheel Trolley Kits - Lube Pro



Popular mobile dispensing kits, complete with 4 wheel trolleys and suited for 200-210L drums. These kits enable easy and efficient means of dispensing the required quantity of oil where it is needed.

Suited for dispensing applications with smooth floor surfaces.

- Digital oil meter gun (21006L) - 0.5% accuracy
- Swivelling rear wheels (1 braked)
- Standard duty kit

Recommended for use with these pumps, a MP10-FRL-AD air filter regulator lubricator to protect pump internals from damage



Alternative Meter Gun:

Lube Pro Preset (21013L)



Add -LP onto kit part numbers



Item No:	23203L	23200L	23200L-HD	23210L
Suits Drum/Container Size:	200-210L	200-210L	200-210L	200-210L
Compression Ratio:	3:1	5:1	5:1	5:1
Air Inlet Pressure:	5-8bar / 70-115psi	5-8bar / 70-115psi	5-8bar / 70-115psi	5-8bar / 70-115psi
Pump Max Output Pressure:	24bar / 350psi	40bar / 580psi	40bar / 580psi	40bar / 580psi
Pump Max Free Flow Rate:	12L/min	14L/min	14L/min	14L/min
Hose Size & Length:	1/2" x 4m	1/2" x 4m	1/2" x 4m	1/2" x 15m Reel
Trolley Type:	4 Wheel (70200)	4 Wheel (70200)	4 Wheel (70201)	4 Wheel (70201)
Components:	4 Wheel Trolley, 3:1 Pump, 4m Hose, Digital Meter Gun	4 Wheel Trolley, 5:1 Pump, 4m Hose, Digital Meter Gun	4 HD Wheel Trolley, 5:1 Pump, 4m Hose, Digital Meter Gun	4 HD Wheel Trolley, 5:1 Pump, 15m Reel, Digital Meter Gun

4 Wheel Trolley Kits - Meclube



Premium quality 4 wheel mobile oil dispensing kits for 200-210L drums. These kits enable easy portability and suited for commercial, high-use applications.

Suited for dispensing applications with smooth floor surfaces.

- Digital oil meter gun (21006) - 0.5% accuracy
- Swivelling rear wheels (1 braked)
- Heavy duty kit

Recommended for use with these pumps, a MP10-FRL-AD air filter regulator lubricator to protect pump internals from damage



Alternative Meter Gun:
Badger Preset (21013BA)



Add -BP onto kit part numbers



Item No:	23203M	23200M	23210M
Suits Drum/Container Size	200-210L	200-210L	200-210L
Compression Ratio:	3:1	5:1	5:1
Air Inlet Pressure:	6-8bar / 85-115psi	6-8bar / 85-115psi	6-8bar / 85-115psi
Pump Max Output Pressure:	24bar / 350psi	40bar / 580psi	40bar / 580psi
Pump Max Free Flow Rate:	20L/min	28L/min	28L/min
Trolley Type:	4 Wheel (70200)	4 Wheel (70200)	4 Wheel (70201)
Hose Size & Length:	1/2" x 4m	1/2" x 4m	1/2" x 15m Reel
Components:	4 Wheel Trolley, 3:1 Pump, Connector Hose, 4m Hose, Digital Meter Gun	4 Wheel Trolley, 5:1 Pump, Connector Hose, 4m Hose, Digital Meter Gun	4 Wheel Trolley, 5:1 Pump, Connector Hose, 15m Reel, Digital Meter Gun

Mobile Electric Dispensing Kit for Drums, 230V (MEOD230)



Product appearance may differ from image shown

This compact and highly manoeuvrable oil dispensing kit facilitates easy portability of 50-210L drums of oil in the workshop area.

Being electric it is also ideal for areas where compressed air is not accessible and therefore not suitable for a pneumatic system.

- Electric self priming gear pump with bypass protection, 230VAC
- Digital oil meter gun with flexible outlet & auto non-drip nozzle
- Comes with 2m power lead & standard 230V plug
- Standard Duty

Pump Only:

230V, 14L/min
(EOP230-14)



Suits Drum/Container Size	50L - 210L Drum
Pump Type:	Electric - 230VAC
Pump Max Output Pressure:	12bar / 175psi
Pump Max Free Flow Rate:	14L/min
Hose Size & Length:	1/2" x 4m
Duty:	Standard
Components:	3 Wheel Trolley, 230VAC Pump, Drum Suction, Kit, 4m Hose, Digital Meter Gun

Mobile Pneumatic Oil Dispensing, 50-60L Drum (23050L)



A mobile dispensing kit designed for transferring oil from a 50-60L drum anywhere in the workshop, and metering the dispensed quantity.

Recommended for use with these pumps, a MP10-FRL-AD air filter regulator lubricator to protect pump internals from damage



Suits Drum/Container Size:	50L - 60L Drum
Trolley Type:	4 Wheel (70050)
Air Inlet Pressure:	5-8bar / 70-115psi
Pump Max Output Pressure:	40bar / 580psi
Pump Max Free Flow Rate:	14L/min
Components:	4 Wheel Trolley 50/60KG, 5:1 Pump, 4m Hose, Digital Meter

Self Contained Mobile Oil Dispensers



These kits are designed for keeping the workshop area tidy in areas where smaller containers of oil (i.e. 20L) are frequently used.

Multiple containers of oil can be poured into the tank, offering a tidier dispensing solution for the workshop.



Included with these products:



Funnel for filling tank

Item No:	OPDU65L	OPDU65L-M	OPDU65L-HP
Suits Drum/Container Size	Self Contained 60L	Self Contained 60L	Self Contained 60L
Pump Type:	Lube Pro Pneumatic	Tank Pressurising Valve	Manual Lever
Air Inlet Pressure:	5-8bar / 70-115psi	5-10bar / 70-145psi	N/A
Pump Max Output Pressure:	40bar / 580psi	10bar / 145psi	N/A
Pump Max Free Flow Rate:	14L/min	N/A	10L/min
Hose Size & Length:	1/2" x 4m	1/2" x 2m	3/8" x 2m
Components:	Mobile 65L Tank, 5:1 Pump, 4m Connector Hose, Digital Meter Gun	Mobile 65L Tank, Pressurisation Valve, 2m Hose, Digital Meter Gun	Mobile 65L Tank, Hand Lever Pump, 2m Hose, Non-Metered Gun

1:1 Stationary Oil Dispensing Pump Kits



Gun appearance may differ to displayed product



High flow oil transfer kits for stationary drum applications.

- Best suited for light to medium oils
- 1:1 Lube Pro oil pumps
- Standard duty kits

Recommended for use with these pumps, a MP10-FRL-AD air filter regulator lubricator to protect pump internals from damage



Item No:	OPDK113M	OPDK113E
Suits Drum/Container Size:	200L - 210L	200L - 210L
Air Inlet Pressure:	5-8bar / 70-115psi	5-8bar / 70-115psi
Pump Max Output Pressure:	8bar / 115psi	8bar / 115psi
Pump Max Freeflow:	32L/min	32L/min
Hose Size & Length:	3/4" x 4m	3/4" x 4m
Dispensing Nozzle:	HF Non-Metered Gun	HF Digital Meter Gun
Components:	1:1 Pump, 4m Hose, Non-Metered Gun	1:1 Pump, 4m Hose, Digital Meter Gun

3:1 Stationary Oil Dispensing Pump Kits



Affordable oil transfer kits for stationary drum applications.

- Best suited for light to medium oils
- 3:1 Lube Pro oil pumps
- Standard duty kits

Recommended for use with these pumps, a MP10-FRL-AD air filter regulator lubricator to protect pump internals from damage



Item No:	OPDK313M	OPDK313E
Suits Drum/Container Size:	200L - 210L	200L - 210L
Air Inlet Pressure:	5-8bar / 70-115psi	5-8bar / 70-115psi
Pump Max Output Pressure:	24bar / 350psi	24bar / 350psi
Pump Max Freeflow:	12L/min	12L/min
Hose Size & Length:	1/2" x 4m	1/2" x 4m
Dispensing Nozzle:	Non-Metered Gun	Digital Meter Gun
Components:	3:1 Pump, 4m Hose, Non-Metered Gun	3:1 Pump, 4m Hose, Digital Meter Gun

5:1 Stationary Oil Dispensing Pump Kits, 200-210L - Lube Pro



LUBE Pro
Professional Lubrication Equipment

Affordable oil transfer kits for stationary drum applications.

- Best suited for medium to heavy oils
- 5:1 Lube Pro oil pumps
- Standard duty kits

Recommended for use with these pumps, a MP10-FRL-AD air filter regulator lubricator to protect pump internals from damage



Item No:	OPDK513M	OPDK513E
Suits Drum/Container Size:	200L - 210L	200L - 210L
Air Inlet Pressure:	5-8bar / 70-115psi	5-8bar / 70-115psi
Pump Max Output Pressure:	40bar / 480psi	40bar / 480psi
Pump Max Freeflow	14L/min	14L/min
Hose Size & Length:	1/2" x 4m	1/2" x 4m
Dispensing Nozzle:	Non-Metered Gun	Digital Metered Gun
Components:	5:1 Pump, 4m Hose, Non-Metered Gun	5:1 Pump, 4m Hose, Digital Meter Gun

5:1 Stationary Oil Dispensing Pump Kits, 50-60L - Lube Pro



LUBE Pro
Professional Lubrication Equipment

Affordable oil transfer kits for stationary drum applications.

- Best suited for medium to heavy oils
- 5:1 Lube Pro oil pumps
- Standard duty kits

Recommended for use with these pumps, a MP10-FRL-AD air filter regulator lubricator to protect pump internals from damage



Item No:	OPDK513M-60	OPDK513E-60
Suits Drum/Container Size:	50L - 60L	50L - 60L
Air Inlet Pressure:	5-8bar / 70-115psi	5-8bar / 70-115psi
Pump Max Output Pressure:	40bar / 480psi	40bar / 480psi
Pump Max Freeflow	14L/min	14L/min
Hose Size & Length:	1/2" x 4m	1/2" x 4m
Dispensing Nozzle:	Non-Metered Gun	Digital Metered Gun
Components:	5:1 Pump, 4m Hose, Non-Metered Gun	5:1 Pump, 4m Hose, Digital Meter Gun

3:1 Stationary Oil Dispensing Pump Kit - Meclube (OPDK313EM)



A premium quality heavy duty oil transfer kit for stationary drum applications.

- Best suited for light to medium oils
- 3:1 Pneumatic oil pump

Recommended for use with these pumps, a MP10-FRL-AD air filter regulator lubricator to protect pump internals from damage



Suits Drum/Container Size:	200L - 210L Drum
Air Inlet Pressure:	6-8bar / 85-115psi
Pump Max Output Pressure:	24bar / 350psi
Pump Max Free Flow Rate:	20L/min
Hose Size & Length:	1/2" x 4m
Dispensing Nozzle:	Digital Metered Gun
Components:	3:1 Pump, 4m Hose, Digital Meter Gun

5:1 Stationary Oil Dispensing Pump Kit - Meclube (OPDK513EM)



A premium quality heavy duty oil transfer kit for stationary drum applications.

- Best suited for medium to heavy oils
- 5:1 Pneumatic oil pump

Recommended for use with these pumps, a MP10-FRL-AD air filter regulator lubricator to protect pump internals from damage



Suits Drum/Container Size:	200L - 210L Drum
Air Inlet Pressure:	6-8bar / 85-115psi
Pump Max Output Pressure:	40bar / 580psi
Pump Max Free Flow Rate:	28L/min
Hose Size & Length:	1/2" x 4m
Dispensing Nozzle:	Digital Metered Gun
Components:	5:1 Pump, 4m Hose, Digital Meter Gun

4:1 Stationary 20L Oil Dispensing Pump Kit, Non-Metered - Meclube (OPDK20M)



This quality air-operated oil pump kit was specifically designed to meet the demand for pumping oil from 20L round oil pails with pop-out spouts.

A truly unique product in the market, this kit ensures the spout opening is covered to prevent contamination.

- 4:1 Pneumatic oil pump
- Non-metered dispensing gun
- Carry handle ensuring mobility convenience

Suits Drum/Container Size:	20L Round Pail
Air Inlet Pressure:	6-8bar / 85-115psi
Pump Max Output Pressure:	32bar / 460psi
Pump Max Free Flow Rate:	7L/min
Components:	4:1 Pneumatic Pump, Drum Cover, Non-Metered Gun, 4m Hose, Air Filter Regulator

4:1 Stationary 20L Oil Dispensing Pump Kit, Metered - Meclube (OPDK20E)



This quality air-operated oil pump kit was specifically designed to meet the demand for pumping oil from 20L round oil pails with pop-out spouts.

A truly unique product in the market, this kit ensures the spout opening is covered to prevent contamination.

- 4:1 Pneumatic oil pump
- Digital metered gun
- Carry handle ensuring mobility convenience

Available Mechanical Gun:
Mechanical Meter Gun (21008)



Suits Drum/Container Size:	20L Round Pail
Air Inlet Pressure:	6-8bar / 85-115psi
Pump Max Output Pressure:	32bar / 460psi
Pump Max Free Flow Rate:	7L/min
Components:	4:1 Pneumatic Pump, Drum Cover, Metered Gun, 4m Hose, Air Filter Regulator

3:1 Wall Mounted Oil Pump Kit (23226L)



This 3:1 wall mount pump kit sucks from a tank or drum, and connects to the workshop oil distribution lines with pumping distances up to 25m for low viscosity oils and 10m for medium viscosity oils.

- 1.5m flexible suction hose

Recommended for use with these pumps, a MPI0-FRL-AD air filter regulator lubricator to protect pump internals from damage



Pump Type:	Pneumatic
Air Inlet Pressure:	5-8bar / 70-115psi
Pump Max Output Pressure:	24bar / 350psi
Pump Max Free Flow Rate:	12L/min
Components:	3:1 Pump, Wall Mount Bracket, Drum Suction Kit

5:1 Wall Mounted Oil Pump Kit (23260L)



This 5:1 wall mount pump kit suits applications where the pump cannot be mounted directly on the tank or container, and is connecting to the existing discharge lines. Suitable for pumping all oil grades.

- 1.5m flexible suction hose

Recommended for use with these pumps, a MPI0-FRL-AD air filter regulator lubricator to protect pump internals from damage



Pump Type:	Pneumatic
Air Inlet Pressure:	5-8bar / 70-115psi
Pump Max Output Pressure:	40bar / 580psi
Pump Max Free Flow Rate:	14L/min
Components:	5:1 Pump, Wall Mount Bracket, Drum Suction Kit

3:1 & 5:1 IBC Side Mount Oil Pump Kits



Quality pump kits designed to fit 1000L IBC's, and connect to installed piping system.

- Suitable for all grades of oil
- Mounting bracket to attach to side of IBC
- IBC not included

Recommended for use with these pumps, a MP10-FRL-AD air filter regulator lubricator to protect pump internals from damage



Item No:	IBC-PK03M	IBC-PK05M	IBC-PK05HF
Suits Drum/Container Size:	IBC (1000L)	IBC (1000L)	IBC (1000L)
Pump Type:	Meclube 3:1	Meclube 5:1	Orion 5:1
Air Inlet Pressure:	6-8bar / 85-115psi	6-8bar / 85-115psi	4-10bar / 60-145psi
Pump Max Output Pressure:	24bar / 350psi	40bar / 580psi	50bar / 725psi
Pump Max Free Flow Rate:	20L/min	25L/min	38L/min
Components:	3:1 Pump, IBC Side Bracket, IBC Suction Kit	5:1 Pump, IBC Side Bracket, IBC Suction Kit	5:1 Pump, IBC Side Bracket, IBC Suction Kit

5:1 IBC Top Mount Oil Pump Kits with Meter Gun & Hose Reel



This IBC dispensing kit is ideal for bulk oil transfer direct to machinery from the IBC and suits applications requiring large volumes of oil.

- Suitable for all grades of oil
- Mounting bracket to attach to top of IBC
- IBC not included

Recommended for use with these pumps, a MP10-FRL-AD air filter regulator lubricator to protect pump internals from damage



Item No:	IBC-ODK105	IBC-ODK105BP
Suits Drum/Container Size:	IBC (1000L)	IBC (1000L)
Pump Type:	Orion 5:1	Orion 5:1
Air Inlet Pressure:	4-10bar / 60-145psi	4-10bar / 60-145psi
Pump Max Output Pressure:	50bar / 725psi	50bar / 725psi
Pump Max Free Flow Rate:	38L/min	38L/min
Components:	5:1 Pump, IBC Top Bracket, IBC Suction Kit Meter Gun, 10m Reel	5:1 Pump, IBC Side Bracket, IBC Suction Kit Preset Meter Gun, 10m Reel

5:1 Wall Mounted Oil Dispensing Kit (23265L)



Wall mount oil dispensing kit, including all the equipment needed for a stationary dispensing system to enable oil dispensing within a 15m radius.

- Suitable for all grades of oil.
- 2m Reel inlet hose

Recommended for use with these pumps, a MP10-FRL-AD air filter regulator lubricator to protect pump internals from damage



Suits Drum/Container Size:	200L - 210L Drum
Air Inlet Pressure:	5-8bar / 70-115psi
Pump Max Output Pressure:	40bar / 580psi
Pump Max Free Flow Rate:	14L/min
Hose Size & Length:	1/2" x 15m Reel
Dispensing Nozzle:	Digital Metered Gun (21006L)
Components:	5:1 Lube Pro Pump, Connector Hose, 15m Hose Reel, Digital Meter Gun, Drip Tray

Premium 5:1 Wall Mounted Oil Dispensing Kit (23265M)



Premium wall mount oil dispensing kit, including all the equipment needed for a stationary dispensing system to enable oil dispensing within a 15m radius.

- Suitable for all grades of oil.
- 2m Reel inlet hose
- Heavy duty kit

Recommended for use with these pumps, a MP10-FRL-AD air filter regulator lubricator to protect pump internals from damage



Suits Drum/Container Size:	200L - 210L Drum
Air Inlet Pressure:	6-8bar / 85-115psi
Pump Max Output Pressure:	40bar / 580psi
Pump Max Free Flow Rate:	28L/min
Hose Size & Length:	1/2" x 15m Reel
Dispensing Nozzle:	Digital Metered Gun (21006)
Components:	5:1 Meclube Pump, Connector Hose, 15m Hose Reel, Digital Meter Gun, Drip Tray

Wall Mounted Oil Bar, 1 Valve - Lube Pro (24101L)



LUBE Pro[®]
Professional Lubrication Equipment

A quality oil bar unit which comes complete with 1 valve, and has room to fit a total of 3 valves.

- Robust steel construction
- Removable drip tray for containment of spills
- 1/2" BSPM valve connection
- 100bar / 1450PSI Max pressure
- Includes 1 dispensing valve

Related Product:

Valve kit for oil bar (24509L)

- Valve handle dual direction operation
- 1/2" BSPM valve connection
- 100bar / 1450PSI Max pressure



Wall Mounted Oil Bar, 1 Valve - Orion (O-24135)



ORION[®]
Alentec & Orion AB SWEDEN

This oil bar comes complete with 1 valve and has room to fit a total of 4 valves. It offers great versatility than most others on the market.

- Robust steel construction
- Removable drip tray for containment of spills
- 1/2" BSPM valve connection
- 100bar / 1450PSI Max pressure
- Includes 1 dispensing valve

Related Product:

Valve kit for oil bar (O-24509)

- Valve handle dual direction operation
- 1/2" BSPM valve connection
- 100bar / 1450PSI Max pressure



1:1 Oil Dispensing Drum Bar (AP1100T-L)



LUBE Pro[®]
Professional Lubrication Equipment

A simple and quick method of decanting oil from a drum to a container.

Related Product:

Drum bar dispenser drip tray with drain (AP1100DT)

A simple attachment to keep your dispenser area tidy.



Suits Drum/Container Size:	200L - 210L Drum
Air Inlet Pressure:	5-8bar / 70-115psi
Pump Max Output Pressure:	8bar / 115psi
Pump Max Free Flow Rate:	32L/min
Dispensing Nozzle:	Bar Valve
Components:	1:1 Lube Pro Pump, Gooseneck Bar Valve

Premium 1:1 Oil Dispensing Drum Bar (AP1100T-M)



MECLUBE

A premium quality pump with bar valve offering a simple and quick method of decanting oil from a drum to a container.

Related Product:

Drum bar dispenser drip tray with drain (AP1100DT)

A simple attachment to keep your dispenser area tidy.



Suits Drum/Container Size:	200L - 210L Drum
Air Inlet Pressure:	6-8bar / 85-115psi
Pump Max Output Pressure:	8bar / 115psi
Pump Max Free Flow Rate:	35L/min
Dispensing Nozzle:	Bar Valve
Components:	1:1 Meclube Pump, Gooseneck Bar Valve

1:1 High Flow Oil Pump - Lube Pro (20194L)



The affordable high flow 1:1 air-operated oil transfer pump is designed for fast transfer of low viscosity oils.

- Includes 2" BSPM drum bung adaptor
- Standard Duty

Recommended for use with these pumps, a MP10-FRL-AD air filter regulator lubricator to protect pump internals from damage



Suits Drum/Container Size	200L - 210L
Air Inlet Pressure:	5-8bar/70-115psi
Pump Max Output Pressure:	8bar / 115psi
Pump Max Free Flow Rate:	32L/min
Pump Outlet:	3/4" BSPM

3:1 Oil Transfer Pumps - Lube Pro



The Lube Pro 3:1 series pneumatic oil pumps are affordable options for dispensing light to medium viscosity oils in lower volume applications.

- Includes 2" BSPM drum bung adaptor
- Standard Duty

Recommended for use with these pumps, a MP10-FRL-AD air filter regulator lubricator to protect pump internals from damage



Item No:	20360L	20394L
Suits Drum/Container Size	Variable	200L - 210L
Air Inlet Pressure:	5-8bar/70-115psi	5-8bar/70-115psi
Pump Max Output Pressure:	24bar / 350psi	24bar / 350psi
Pump Max Free Flow Rate:	12L/min	12L/min
Pump Outlet:	1/2" BSPM	1/2" BSPM

5:1 Oil Transfer Pumps - Lube Pro



The Lube Pro 5:1 series pneumatic oil pumps are capable and affordable options for dispensing medium to high viscosity oils in lower volume applications.

- Includes 2" BSPM drum bung adaptor
- Standard Duty

Recommended for use with these pumps, a MP10-FRL-AD air filter regulator lubricator to protect pump internals from damage



Item No:	20560L	20574L	20594L
Suits Drum/Container Size	Variable	50L - 60L	200L - 210L
Air Inlet Pressure:	5-8bar / 70-115psi	5-8bar / 70-115psi	5-8bar / 70-115psi
Pump Max Output Pressure:	40bar / 580psi	40bar / 580psi	40bar / 580psi
Pump Max Free Flow Rate:	14L/min	14L/min	14L/min
Pump Outlet:	1/2" BSPM	1/2" BSPM	1/2" BSPM

9:1 Oil Transfer Pump (20960L)



A powerful 9:1 oil pump designed to push heavy oils for long distances. This heavy duty pump handles many difficult oil transfer applications with ease.

- Includes 2" BSPM drum bung adaptor
- Heavy duty

Recommended for use with these pumps, a MP10-FRL-AD air filter regulator lubricator to protect pump internals from damage



Suits Drum/Container Size	Variable
Air Inlet Pressure:	5-12bar / 70-175psi
Pump Max Output Pressure:	108bar / 1570psi
Pump Max Free Flow Rate:	20L/min
Pump Outlet:	3/4" BSPF

1:1 Oil Transfer Pumps - Meclube



The Meclube 1:1 ratio pneumatic oil pump series are quality options designed for fast transfer of light to medium oils.

- Includes 2" BSPM drum bung adaptor
- Heavy Duty

Recommended for use with these pumps, a MP10-FRL-AD air filter regulator lubricator to protect pump internals from damage



Item No:	M-0200978	M-0200985
Suits Drum/Container Size	Variable	200L - 210L
Air Inlet Pressure:	6-8bar / 85-115psi	6-8bar / 85-115psi
Pump Max Output Pressure:	8bar / 115psi	8bar / 115psi
Pump Max Free Flow Rate:	35L/min	35L/min
Pump Outlet:	3/4" BSPM	3/4" BSPM

3:1 Oil Transfer Pumps - Meclube



The Meclube 3:1 pneumatic pump series provides a long service life, pumping light to medium viscosity oils and coolant in workshop and industrial applications.

- Includes 2" BSPM drum bung adaptor
- Heavy Duty

Recommended for use with these pumps, a MP10-FRL-AD air filter regulator lubricator to protect pump internals from damage



Item No:	M-0200988	M-0200995
Suits Drum/Container Size	Variable	200L - 210L
Air Inlet Pressure:	6-8bar / 85-115psi	6-8bar / 85-115psi
Pump Max Output Pressure:	24bar / 350psi	24bar / 350psi
Pump Max Free Flow Rate:	20L/min	20L/min
Pump Outlet:	1/2" BSPM	1/2" BSPM

5:1 Oil Transfer Pumps - Meclube



The premium Meclube 5:1 pneumatic pump series provides a long service life, pumping medium to heavy viscosity oils in workshop and industrial applications.

- Includes 2" BSPM drum bung adaptor
- Heavy Duty

Recommended for use with these pumps, a MP10-FRL-AD air filter regulator lubricator to protect pump internals from damage



Item No:	M-0201198	M-0201205
Suits Drum/Container Size	Variable	200L - 210L
Air Inlet Pressure:	6-8bar / 85-115psi	6-8bar / 85-115psi
Pump Max Output Pressure:	40bar / 580psi	40bar / 580psi
Pump Max Free Flow Rate:	28L/min	28L/min
Pump Outlet:	1/2" BSPM	1/2" BSPM

8:1 Oil Transfer Pumps - Meclube (M-0201207)



The premium Meclube 8:1 pneumatic pump series provides a long service life, pumping medium to heavy viscosity oils in workshop and industrial applications.

- Includes 2" BSPM drum bung adaptor
- Heavy Duty

Recommended for use with these pumps, a MP10-FRL-AD air filter regulator lubricator to protect pump internals from damage



Suits Drum Size:	Variable
Air Inlet Pressure:	6-8bar / 85-115psi
Pump Max Output Pressure:	64bar / 930psi
Pump Max Free Flow Rate:	20L/min
Duty:	Heavy
Pump Outlet:	1/2" BSPM

3:1 Oil Transfer Pump - Orion



The Orion 3:1 ratio pneumatic transfer pump is a premium quality industrial pump which suits pipe, mounting and drum applications.

- Includes 2" BSPM drum bung adaptor
- Heavy Duty

Recommended for use with these pumps, a MP10-FRL-AD air filter regulator lubricator to protect pump internals from damage



Item No:	O-22810	O-22815
Suits Drum/Container Size	Variable	200L - 210L
Air Inlet Pressure:	4-10bar / 60-145psi	4-10bar / 60-145psi
Pump Max Output Pressure:	30bar / 435psi	30bar / 435psi
Pump Max Free Flow Rate:	22L/min	22L/min
Pump Outlet:	3/4" BSPF	3/4" BSPF

5:1 Oil Transfer Pumps - Orion



The Orion 5:1 ratio pneumatic pump is a premium quality industrial pump which will offer a long service life in high volume applications and demanding environments.

- Includes 2" BSPM drum bung adaptor
- Heavy Duty

Recommended for use with these pumps, a MP10-FRL-AD air filter regulator lubricator to protect pump internals from damage



Item No:	O-22750	O-22752
Suits Drum/Container Size	Variable	200L - 210L
Air Inlet Pressure:	4-10bar / 60-145psi	4-10bar / 60-145psi
Pump Max Output Pressure:	50bar / 725psi	50bar / 725psi
Pump Max Free Flow Rate:	38L/min	38L/min
Pump Outlet:	3/4" BSPF	3/4" BSPF

15:1 Oil Transfer Pump - Orion (O-22762)



The Orion 15:1 oil drum pump is a premium quality industrial pump suited for long distance pumping of thick oils, and short distance transfer of liquid greases.

- Includes 2" BSPM drum bung adaptor
- Heavy Duty

Recommended for use with these pumps, a MP10-FRL-AD air filter regulator lubricator to protect pump internals from damage



Suits Drum Size:	Variable
Air Inlet Pressure:	4-10bar / 60-145psi
Pump Max Output Pressure:	150bar / 2175psi
Pump Max Free Flow Rate:	15L/min
Pump Outlet:	3/4" BSPF



Enquire about workshop lubrication system installations. We have a solution for every application.

Bung Adaptor, suits 42mm (22042)



Screws into the 2" BSP port on a drum or tank, this bung adaptor clamps around a 42mm suction tube, while still allowing the drum/tank to breathe.



Stub Pump Mounting Bracket (38043)



Mounting bracket to allow easy remote mounting of Lube Pro stub pumps in applications where the pump does not mount directly into the tank or drum.



Oil Pump Foot Valve, 1" BSP (OPFV1)



Replacement foot valve to suit Lube Pro oil pumps. Male thread fits Lube Pro Pump tube, and female thread in the base is 1" BSP.



Oil Pump Foot Filter, 1" BSP (OPFF-1)



Replacement foot filter for removing foreign particles on the pump suction inlet. 1" BSP thread connection.



Diaphragm Pump Wall Mount Bracket (PDDP-B1)



Wall mount bracket to suit double diaphragm pumps.



Related Products:

Diaphragm Pumps
Page 24



Stub Pump Mounting Bracket (M-0251265)



This well constructed bracket allows the bung adapter on the Meclube pump to thread directly into it. Bung adapter tightens around the pump suction tube holding pump securely in place.



Stub Pump Mounting Bracket (O-28524)



This sturdy bracket has a 2" BSP thread in the top face which allows the bung adapter on the pump to thread directly into it. Bung adapter tightens around the pump suction tube holding pump securely in place.



Drum Suction Kit (STA940ASSY)



For applications where the pump is remote mounted, this kit contains all the components commonly needed to move the fluid from the drum to the pump inlet.



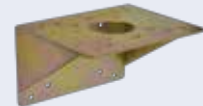
1/2" Double Diaphragm Pumps, 50L/Min



Versatile air operated double diaphragm pumps commonly used for waste oil applications, but are suitable for other fluids and chemicals as well.

- Viton seal pump is suitable for chemical and food grade applications
- Nitrile seal pump with aluminium body is suitable for oil applications

Related Product:
Wall Mount Bracket (PDDP-B1)



Showing product PDDP15-45V

Item No:	PDDP15-45	PDDP15-45V
Air Inlet Pressure:	3-8bar / 45-115psi	3-8bar / 45-115psi
Pump Max Output Pressure:	8bar / 115psi	8bar / 115psi
Pump Max Free Flow Rate:	50L/min	50L/min
Pump Outlet:	1/2" BSPF	1/2" BSPF
Seals & Diaphragms:	Nitrile	Viton
Body Material:	Aluminium	Polypropylene

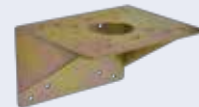
3/4" Double Diaphragm Pumps, 62L/Min



These highly versatile air operated transfer pumps are suitable for pumping many fluids including water, many chemicals and food grade applications.

- Viton seal pump is suitable for chemical and food grade applications
- Nitrile seal pump with aluminium body is suitable for oil applications

Related Product:
Wall Mount Bracket (PDDP-B1)



Showing product PDDP20-60

Item No:	PDDP20-60	PDDP20-60V
Air Inlet Pressure:	3-8bar / 45-115psi	3-8bar / 45-115psi
Pump Max Output Pressure:	8bar / 115psi	8bar / 115psi
Pump Max Free Flow Rate:	62L/min	62L/min
Pump Outlet:	3/4" BSPF	3/4" BSPF
Seals & Diaphragms:	Nitrile	Viton
Body Material:	Aluminium	Polypropylene

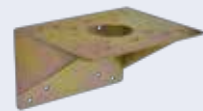
1" Double Diaphragm Pumps, 90L/Min - Lube Pro



These Lube Pro air operated double diaphragm pumps are ideal for high volume transfer applications, suited for dispensing of oil, waste oil, chemicals and other fluids.

- For more pumping of more viscous fluids, please refer to 22310

Related Product:
Wall Mount Bracket (PDDP-B1)



Item No:	PDDP1-90	PDDP1-90V
Air Inlet Pressure:	3-8bar / 45-115psi	3-8bar / 45-115psi
Pump Max Output Pressure:	8bar / 115psi	8bar / 115psi
Pump Max Free Flow Rate:	90L/min	90L/min
Pump Outlet:	1" BSPF	1" BSPF
Seals & Diaphragms:	Nitrile	Viton
Body Material:	Aluminium	Aluminium

1" Double Diaphragm Pump, 100L/Min - Orion (O-22310)



Designed for high flow and low pressure fluid transfer applications, this pneumatic pump is particularly well suited for the transfer of high viscosity oils and other fluids. Suitable for pumping oil, diesel and other non-corrosive fluids.

- Fully bolted & serviceable construction

Recommended for use with these pumps, a MP10-FRL-AD air filter regulator lubricator to protect pump internals from damage



Pump Type:	Pneumatic
Air Inlet Pressure:	3-10bar / 45-145psi
Pump Max Output Pressure:	7bar / 100psi
Pump Max Free Flow Rate:	100L/min
Pump Outlet:	1" BSPF
Seals & Diaphragms:	Nitrile
Body Material:	Aluminium

Double Diaphragm Pumps - Meclube



High quality and premium products, these air-operated double diaphragm pumps are well suited for the transfer of clean oil, waste oil, diesel fuel and many other fluids.

Recommended for use with these pumps, a MP10-FRL-AD air filter regulator lubricator to protect pump internals from damage



Item No:	M-028A110AB1	M-028A170AB1
Air Inlet Pressure:	3-8bar / 45-115psi	3-8bar / 45-115psi
Pump Max Output Pressure:	8bar / 115psi	8bar / 115psi
Pump Max Free Flow Rate:	110L/min	170L/min
Fluid Inlet & Outlet Size:	3/4" BSPF	1" BSPF
Seals & Diaphragms:	Nitrile	Nitrile
Body Material:	Aluminium	Aluminium

1" Double Diaphragm Pump - Meclube (M-028170AB1-TP)



A high quality, premium product, this air operated double diaphragm pump is designed for high flow applications and can pump many different types of fluids. This unique pump allows for the simultaneous transfer of two separate fluids.

- Max flow rate of 85L per minute per fluid

Recommended for use with these pumps, a MP10-FRL-AD air filter regulator lubricator to protect pump internals from damage



Pump Type:	Pneumatic
Air Inlet Pressure:	3-8bar / 45-115psi
Pump Max Output Pressure:	8bar / 115psi
Pump Max Free Flow Rate:	170L/min (Total of both ports)
Pump Outlet:	1" BSPF
Seals & Diaphragms:	Nitrile
Body Material:	Aluminium

12V Electric Oil Transfer Pump (EODK12V)



Designed for oil dispensing applications, this 12V electric oil pump is well suited for small scale servicing operations in the field.



- Self priming gear pump with internal bypass valve
- 2m Electric cable with terminal clips
- Max viscosity 500cSt
- Suction lift 2m
- Not suitable for waste oil

Suits Drum/Container Size:	Variable
Pump Type:	Electric - 12VDC
Pump Outlet:	3/4" BSPF
Pump Max Output Pressure:	4bar / 60psi
Pump Max Free Flow Rate:	10L/min
Fluid or Medium Type:	Oil

230V Electric Oil Transfer Pump (EOP230-14)



This 230V single phase oil pump is used in areas where pneumatic oil pumps cannot be used due to lack of compressed air supply or other reasons. Suitable for dispensing applications through a short hose.



- Self priming gear pump with internal bypass valve
- Max viscosity 2000cSt
- Suction lift 2m
- Not suitable for unfiltered waste oil

Related Product:
4 Wheel Kit (MEOD230)



Pump Type:	Electric - 230VAC
Pump Outlet:	1" BSPF
Pump Max Output Pressure:	12bar / 175psi
Pump Max Free Flow Rate:	14L/min
Fluid or Medium Type:	Oil

230V Electric Oil Pump Kit for Pressurised Systems (EOP230-14-PS)



LUBE Pro[®]
Professional Lubrication Equipment

This electric oil pump assembly is specifically designed for oil dispensing applications where the system is kept under pressure, and an electric system is required (generally these applications have a pneumatic pump). This pump comes set up and ready to connect into your system.

- Electric self priming gear pump with bypass protection
- Includes pressure switch & other required components
- Suction lift 2m
- Not suitable for waste oil

Pump Type:	Electric - 230VAC
Pump Outlet:	1" BSPF
Pump Max Output Pressure:	12bar / 175psi
Pump Max Free Flow Rate:	14L/min
Components:	230VAC Pump, Pressure Switch, Check Valve, Fittings

230V Electric Oil Transfer Pump (EOP230-40)



LUBE Pro[®]
Professional Lubrication Equipment

This 230V single phase, high flow oil transfer pump is suited for quick high volume transfer applications such as tank filling.

- Self priming gear pump with internal bypass valve
- Max viscosity 2000cSt
- Suction lift 2m
- Not suitable for unfiltered waste oil

Pump Type:	Electric - 230VAC
Pump Outlet:	1" BSPF
Pump Max Output Pressure:	10bar / 145psi
Pump Max Free Flow Rate:	40L/min
Fluid or Medium Type:	Oil

Standard Duty Oil Hose Reels, 1/2" x 15m - Lube Pro



These highly popular spring-retractable oil hose reels are excellent performers in many oil dispensing applications.

- Steel construction
- Spring retractable

Related Product:

Lube Pro Swivel Bracket (62015L-SB)
For Fixed Mount Reels



Item No:	62015L	62015LS
Fluid or Medium Type:	Oil	Oil
Hose Size & Length:	1/2" x 15m	1/2" x 15m
Outlet Connection:	1/2" BSPM	1/2" BSPM
Max Operating Pressure:	160bar / 2320psi	160bar / 2320psi
Base Mounting:	Fixed	Swivel
Duty:	Standard	Standard

Heavy Duty Oil Hose Reel, 1/2" x 25m - Lube Pro (62025L)

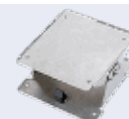


This sturdy oil dispensing reel comes complete with 25m of oil hose, making this hard to find reel suitable for a range of commercial and industrial applications.

- Steel construction
- Spring retractable

Related Product:

Lube Pro Swivel Bracket (62025L-SB)



Fluid or Medium Type:	Oil
Hose Size & Length:	1/2" x 25m
Outlet Connection:	1/2" BSPM
Max Operating Pressure:	160bar / 2320psi
Base Mounting:	Fixed

Standard Duty Oil Hose Reels, 1/2" - Orion



Very popular moderate duty spring retractable reels which are suited to many different oil dispensing applications.

- Aluminium & composite construction
- Spring retractable, single arm hose guide

Related Product:

Orion Swivel Bracket (O-28913)



Item No:	O-25232	O-25235
Fluid or Medium Type:	Oil	Oil
Hose Size & Length:	1/2" x 10m	1/2" x 15m
Outlet Connection:	1/2" BSPM	1/2" BSPM
Max Operating Pressure:	75 bar / 1090psi	75 bar / 1090psi
Base Mounting:	Fixed	Fixed

Heavy Duty Oil Hose Reel, 1/2" - Orion



These auto-retract heavy duty oil dispensing reels are one of the most robust products of this class on the market.

- Very sturdy steel construction
- Spring retractable, easy adjustable arm guide

Related Product:

Orion Swivel Bracket (O-28913)



Item No:	O-25132	O-25135
Fluid or Medium Type:	Oil	Oil
Hose Size & Length:	1/2" x 10m	1/2" x 15m
Outlet Connection:	1/2" BSPM	1/2" BSPM
Max Operating Pressure:	75 bar / 1090psi	75 bar / 1090psi
Base Mounting:	Fixed	Fixed

Enclosed Oil Hose Reel, 1/2" x 10m - Lube Pro (62510L)



A quality enclosed auto-retractable oil hose reel which is well suited to most automotive workshop applications. Enclosed case design contributes to a professional and tidy workshop environment.

- Steel construction
- Enclosed design
- Spring retractable

Fluid or Medium Type:	Oil
Hose Size & Length:	1/2" x 10m
Outlet Connection:	1/2" BSPM
Max Operating Pressure:	160bar / 2320psi
Base Mounting:	Swivel

Heavy Duty Fuel Transfer Hose Reel, 1" x 30m - Lube Pro (63030L)



This spring retractable diesel hose reel is compact with a low profile, making it well suited for machinery refueling and low pressure oil transfer operations.

- Steel construction
- Spring retractable
- Heavy duty

Fluid or Medium Type:	Oil, Diesel & Kerosene
Hose Size & Length:	1" x 30m
Outlet Connection:	1" BSPM
Max Operating Pressure:	10bar / 145psi
Base Mounting:	Fixed

Swivel Mount Bracket (62015L-SB)

**Suitable For:**

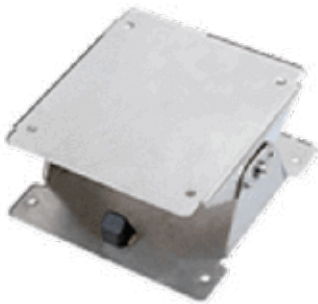
61015L 62015L
64015L 64115L



LUBE Pro[®]
Professional Lubrication Equipment

Swivel bracket to suit Lube Pro fixed mount reel 62015L for applications where the reel needs to swivel from side to side.

Swivel Mount Bracket (62025L-SB)

**Suitable For:**

1/2" 25m Lube Pro Oil Reel
62025L



LUBE Pro[®]
Professional Lubrication Equipment

Swivel bracket to suit Lube Pro fixed mount reel 62025L for applications where the reel needs to swivel from side to side.

Swivel Mount Bracket (O-28913)

**Suitable For:**

O-15125 O-15212
O-25132 O-25135
O-25232 O-25235



ORION[®]
Alantec & Orion AB SWEDEN

Swivel bracket to suit Orion fixed mount reels for applications where the reel needs to swivel from side to side.

1/2" Hydraulic Oil Assemblies



LUBE Pro[®]
Professional Lubrication Equipment

Pre-assembled oil hoses suited for many applications such as jump hose connections, and kit dispensing lines etc.

- 1 Wire 1/2" hose
- Pressure rated to 138 bar / 2000 psi

Item No:	82001	82002	82004	82004-MF	82006	82010
Length:	0.8m	2m	4m	4m	6m	10m
End Connections:	FF	FF	FF	MF	FF	FF



Enquire about our hose crimping capabilities. Custom hose lengths and fittings can be crimped to suit many applications.

Oil Control Valve - Flexible Outlet (21026L)



LUBE Pro[®]
Professional Lubrication Equipment

A robust and ergonomic non-metered oil control valve suited to workshop and field dispensing applications.

- Flexible outlet with non-drip nozzle
- Standard duty

Related Product:

Lube Pro Digital Meter Gun
(21006L)



Fluid or Medium Type:	Oil
Pressure Range:	0.5-100bar / 7-1450psi
Inlet Connection:	1/2" BSPF
Outlet Type:	Flexible with Auto Non-Drip Nozzle
Flow Range:	1-35L/min

High Flow Oil Control Valve - Rigid Outlet (21025L-HF)



LUBE Pro[®]
Professional Lubrication Equipment

A high flow oil control valve designed for the unmetered transfer of large volumes of oil.

- Rigid outlet with non-drip nozzle
- Standard duty

Related Product:

High Flow Digital Meter Gun
(21003L-HF)



Fluid or Medium Type:	Oil
Pressure Range:	0.5-50bar / 7-725psi
Inlet Connection:	3/4" BSPF
Outlet Type:	Rigid with Auto Non-Drip Nozzle
Flow Range:	1-80L/min

Digital Oil Meter Gun, 1/2" - Lube Pro (21006L)



A very popular, compact and ergonomic electronic oil meter gun which is suited for a wide range of oil dispensing applications.

- Two totalizers - 1 fixed, 1 resettable
- Includes protective rubber meter shroud

Available Preset Metered Gun:
Lube Pro Electronic Meter Gun
(21013L)



Fluid or Medium Type:	Oil
Flow Range:	1-35L/min
Pressure Range:	0.5-70bar / 7-1015psi
Inlet Connection:	1/2" BSPF
Outlet Type:	Flexible with Auto Non-Drip Nozzle
Meter Accuracy:	±0.5%

Digital Oil Meter Gun, 1/2" - Badger Meter (21006)



A robust electronic oil meter gun which is suited for high use applications.

- Two totalizers - 1 fixed, 1 resettable
- 2 Year warranty

Available Preset Metered Gun:
Badger Digital Meter Gun
(21013BA)



Fluid or Medium Type:	Oil
Flow Range:	1-35L/min
Pressure Range:	0.5-100bar / 7-1450psi
Inlet Connection:	1/2" BSPF
Outlet Type:	Flexible with Auto Non-Drip Nozzle
Meter Accuracy:	±0.5%

Digital Water-Based Fluids Meter Gun, 1/2" - Badger Meter (102370)



This heavy duty electronic meter gun is designed for dispensing water based products such as mixed windscreen washing detergent, pre-mixed coolant etc.

- Two totalizers - 1 fixed, 1 resettable
- 2 Year warranty

Available Metered Gun For Oils:

Badger Digital Meter Gun
(21006)



Fluid or Medium Type:	Coolant & Windshield Fluid
Flow Range:	1-35L/min
Pressure Range:	0.5-100bar / 7-1450psi
Inlet Connection:	1/2" BSPF
Outlet Type:	Flexible with Auto Non-Drip Nozzle
Meter Accuracy:	±0.5%

Digital Oil Meter Gun, 1/2" (O-24785)



This digital oil meter gun is a popular and robust option which suits a wide variety of applications.

- Two totalizers - 1 fixed, 1 resettable
- 2 Year warranty
- Heavy Duty

Fluid or Medium Type:	Oil
Flow Range:	1-30L/min
Pressure Range:	0.5-70bar / 7-1015psi
Inlet Connection:	1/2" BSPF
Outlet Type:	Flexible with Auto Non-Drip Nozzle
Meter Accuracy:	±0.5%

Mechanical Oil Meter Gun, 1/2" - Meclube (21008)



This is a compact, reliable, lightweight oval gear meter gun for controlling oil dispenses in the most varying conditions of use

- Two totalizers - 1 fixed, 1 resettable
- Suitable for fluids with a maximum viscosity of up to 2000cst

Available Mechanical Preset Metered Gun:

Orion Preset Mechanical Gun
(O-24797)



Fluid or Medium Type:	Oil
Flow Range:	1-30L/min
Pressure Range:	1-70bar / 14.5-1015psi
Inlet Connection:	1/2" BSPF
Outlet Type:	Flexible with Auto Non-Drip Nozzle
Meter Accuracy:	±0.1%

High Flow Digital Oil Meter Gun, 3/4" - Lube Pro (21003L-HF)



Designed for transfers where large volumes of oil are being dispensed, this meter gun causes minimal pressure drop allowing good flows at low pressures.

- Two totalizers - 1 fixed, 1 resettable

Available Non-Metered Gun:

Lube Pro High Flow Meter Gun
(21025L-HF)



Fluid or Medium Type:	Oil
Flow Range:	1-60L/min
Pressure Range:	0.5-70bar / 7-1015psi
Inlet Connection:	3/4" BSPF
Outlet Type:	Rigid with Auto Non-Drip Nozzle
Meter Accuracy:	±0.5%

Electronic Pre-Set Meter Gun, Oil (21013L)



LUBE Pro[®]
Professional Lubrication Equipment

An economy pre-set oil meter gun, this is a lightweight gun which suits basic pre-set dispensing applications well.

- Pre-selects up to 99L
- Automatically stops once pre-set amount is reached

Fluid or Medium Type:	Oil
Flow Range:	1-35L/min
Pressure Range:	0.5-65bar / 7-945psi
Inlet Connection:	1/2" BSPF
Outlet Type:	Flexible with Auto Non-Drip Nozzle
Meter Accuracy:	±0.5%
Duty:	Standard

Heavy Duty Digital Pre-Set Meter Gun, Oil (21013BA)



Badger Meter

This heavy duty electronic pre-set meter gun is manufactured in the USA, and is the most robust digital pre-set meter gun on the market.

- Pre-selects up to 999L
- Automatically stops once pre-set amount is reached
- 2 Year warranty
- Made in USA

Fluid or Medium Type:	Oil
Flow Range:	1-30L/min
Pressure Range:	0.5-65bar / 7-945psi
Inlet Connection:	1/2" BSPF
Outlet Type:	Flexible with Auto Non-Drip Nozzle
Meter Accuracy:	±0.5%
Duty:	Heavy

Heavy Duty Digital Pre-Set Meter Gun, Water Based Fluids (102473)



This heavy duty electronic meter gun is designed for pre-set quantity dispensing of water based products such as mixed windscreen washing detergent & coolant.

- Pre-selects up to 999L
- Automatically stops once pre-set amount is reached
- 2 Year warranty
- Made in USA

Fluid or Medium Type:	Coolant, Windsheild Fluid, & other Water Based Fluids
Flow Range:	1-30L/min
Pressure Range:	0.5-65bar / 7-945psi
Inlet Connection:	1/2" BSPF
Outlet Type:	Flexible with Auto Non-Drip Nozzle
Meter Accuracy:	±0.5%
Duty:	Heavy

Mechanical Pre-Set Oil Meter Gun (O-24797)



A rugged mechanical pre-set meter which dispenses pre-selected quantities up to 60L, and can be used out in the weather due to fully mechanical operation.

- Pre-selects up to 60L
- Automatically stops once pre-set amount is reached.
- No batteries required
- 2 Year warranty
- Made in USA

Fluid or Medium Type:	Oil
Flow Range:	2-30L/min
Pressure Range:	1-100bar / 14-1450psi
Inlet Connection:	1/2" BSPF
Outlet Type:	Rigid with Non-Drip Nozzle
Meter Accuracy:	±0.65%
Duty:	Heavy

Digital Oil Flow Meter, 1/2" - Lube Pro (21005L)



This inline electronic oil flow meter features an aluminium body, and is suited to a wide range of oil metering applications.

- Two totalizers - 1 fixed, 1 resettable

**Related Product:**

Lube Pro Digital Meter Gun
(21006L)



Fluid or Medium Type:	Oil
Flow Range:	1-35L/min
Pressure Range:	0.5-100bar / 7-1450psi
Inlet Connection:	1/2" BSPF
Outlet Type:	1/2" BSPF
Meter Accuracy:	±0.5%
Duty:	Standard

Mechanical Oil Flow Meter, 1/2" - Meclube (21007M)



This robust mechanical inline flow meter is suited for oil dispensing applications in harsh environments which are not suitable for digital meters.

- Two totalizers - 1 fixed, 1 resettable

**Related Product:**

Meclube Mechanical Meter Gun
(21008)



Fluid or Medium Type:	Oil
Flow Range:	1-30L/min
Pressure Range:	0.5-70bar / 7-1015psi
Inlet Connection:	1/2" BSPF
Outlet Type:	1/2" BSPF
Meter Accuracy:	±0.1%
Duty:	Heavy

Digital Oil Flow Meter, 1/2" - Badger Meter (21005)



This inline electronic oil flow meter features a robust aluminium body, and is suited to a wide range of oil metering applications.

- Two totalizers - 1 fixed, 1 resettable

Related Product:

Badger Digital Meter Gun
(21006)



Fluid or Medium Type:	Oil
Flow Range:	1-35L/min
Pressure Range:	0.5-100bar / 7-1450psi
Inlet Connection:	1/2" BSPF
Outlet Type:	1/2" BSPF
Meter Accuracy:	±0.5%
Duty:	Heavy

High Flow Digital Oil Meter, 1" - Badger Meter (21005-HF25)



This inline electronic oil flow meter features a robust aluminium body, and is suited to a wide range of oil metering applications.

- Two totalizers - 1 fixed, 1 resettable
- 2 Year warranty
- Made in Germany

Fluid or Medium Type:	Oil
Flow Range:	3-115L/min
Pressure Range:	0.35-100bar / 5-1450psi
Inlet Connection:	1" BSPF
Outlet Type:	1" BSPF
Meter Accuracy:	±0.5%
Duty:	Heavy

Oil Gun Station with Drip Tray (67300A)



This oil gun station secures the oil dispensing guns hanging from wall mounted hose reels, and keeps them tidily stored against the wall out of the way. The removable drip tray also prevents oil from dripping on the floor. Both of these functions serve to contribute to a tidy and safe workshop environment.



Oil Gun Drip Holster (O-29090)



A compact and tidy gun holster to catch drips from oil and grease dispensing guns.



Avoid slipping hazards and maintain a tidy work area by incorporating our oil gun stations with included drip tray



Talk to us to discuss our workshop installation services

Oil Suction Gun, 500ml (SG500L)



LUBE Pro
Professional Lubrication Equipment

Manual oil suction pump for applications such as gear box and diff oil changes etc.

- Maximum capacity 500ml
- Suitable for both emptying and filling small oil reservoirs

Multi Purpose Mini Dispenser - 1L (PP1L-K)



LUBE Pro
Professional Lubrication Equipment

Suits many different applications in the field of small engine servicing & other applications where small volumes of oil or other fluids are being dispensed.

- 1L Capacity
- Push/Pull pump operation

Manual Piston Fluid Pump for 20L Containers - Lube Pro



LUBE Pro
Professional Lubrication Equipment

High quality hand-operated oils pumps for 20L containers, incorporating suction tube extension and down stroke fluid displacement to facilitate easy pumping action.

- 1.5m Anti-kink dispensing hose with nozzle valve to reduce dripping
- Telescopic suction tube extension to suit different height containers
- Includes removable filter in dispensing handle
- Thread adapters to suit different size containers - please enquire

Item No:	PP20L-P	PP20L-ATF
Suits Drum/Container Size:	20L Cube	20L Cube
Fluid or Medium Type:	Oil	ATF
Pump Type:	Manual Piston	Manual Piston
Pump Outlet:	Hose & Nozzle	Hose & Nozzle
Pump Max Free Flow Rate:	60ml/stroke	60ml/stroke
Duty:	Standard	Standard

Stainless Steel Chemical Pump, 205L Drum Length (PP200SS)



LUBE Pro
Professional Lubrication Equipment

With wetted parts consisting of stainless steel & Teflon, this manual drum pump is highly popular due to its ability to handle a wide spectrum of chemicals. Highly durable and suited for dispensing most fluids, this stainless steel drum pump is one of the most versatile hand operated drum pumps on the market.

- Made from 304 Stainless Steel & Teflon
- Suitable for pumping many chemicals, acids, solvents, fuels etc

Suits Drum/Container Size:	50L - 210L Drum
Pump Type:	Manual Piston
Pump Outlet:	Spout
Pump Max Free Flow Rate:	600ml/stroke
Duty:	Standard

Spring Operated Pumps, 20L - with 1.5m Hose - Lube Pro



These oil spring pumps are popular options for dispensing oil from 20L drums. Fits containers others don't and includes capability to add extensions to suction tubes.

- 1.5m Anti-kink dispensing hose with thumb trigger dispensing valve
- Holder for dispensing nozzle allows any drips of oil to drain back into the container
- Thread adapters to suit different size containers - please enquire

Item No:	SP20L	SP20L-ATF
Suits Drum/Container Size:	20L	20L
Fluid or Medium Type:	Oil	Oil/ATF
Pump Type:	Sprung Piston	Sprung Piston
Pump Outlet:	Hose & Nozzle	Hose & Nozzle
Pump Max Free Flow Rate:	250ml/stroke	250ml/stroke
Duty:	Standard	Standard

Spring Operated Pumps, 60L - with 1.5m Hose - Lube Pro



Popular and quality pumps for low volume oil dispensing from 60L drums.

- 1.5m Anti-kink dispensing hose with thumb trigger dispensing valve
- Holder for dispensing nozzle allows any drips of oil to drain back into the container.

Item No:	SP60L	SP60L-ATF
Suits Drum/Container Size:	50-60L	50-60L
Fluid or Medium Type:	Oil	Oil/ATF
Pump Type:	Sprung Piston	Sprung Piston
Pump Outlet:	Hose & Nozzle	Hose & Nozzle
Pump Max Free Flow Rate:	500ml/stroke	500ml/stroke
Duty:	Standard	Standard

Rotary Oil Transfer Pump, Steel Construction (DP0250)



LUBE Pro
Professional Lubrication Equipment

An economical method of dispensing low to medium viscosity oil from drums. An economical method of dispensing low to medium viscosity oil from drums.

- Dispenses up to 20L/minute
- Standard 2" BSPM drum thread adaptor & 3 piece suction tube
- Suitable for pumping light & medium oil grades

Suits Drum/Container Size:	60L - 210L Drum
Pump Type:	Manual Rotary
Pump Outlet:	Spout
Pump Max Free Flow Rate:	280ml/rotation
Duty:	Standard

Rotary Oil Transfer Pump, Aluminium Construction (DP0250AL)



LUBE Pro
Professional Lubrication Equipment

An economical method of dispensing low to medium viscosity oil, kerosene and diesel from drums. This aluminium rotary drum pump is a popular choice for simple low volume dispensing operations.

- Dispenses up to 20L/minute
- Standard 2" BSPM drum thread adaptor & 3 piece suction tube
- Suitable for pumping light & medium oil grades, diesel & kerosene

Related Product:

Rotary pump with delivery hose and nozzle (DP0250AL-H)



Suits Drum/Container Size:	60L - 210L Drum
Pump Type:	Manual Rotary
Pump Outlet:	Spout
Pump Max Free Flow Rate:	280ml/rotation
Duty:	Standard

Rotary Chemical Transfer Pump, Ryton Construction (RPP901)



Constructed from Ryton, Teflon and Polypropylene, this rotary drum pump is suitable for low volume dispensing of numerous different fuels and chemicals.

- Dispenses up to 20L/minute
- Standard 2" BSPM drum thread adaptor & 3 piece suction tube
- Suitable for pumping light & medium oil grades, diesel, kerosene, coolant, water based products and many solvents and chemicals

Suits Drum/Container Size:	60L - 210L Drum
Pump Type:	Manual Rotary
Pump Outlet:	Spout
Pump Max Free Flow Rate:	300ml/rotation
Duty:	Standard

High Flow Rotary Fuel Pump, with 2m Hose & Nozzle (AR9920-HS)



This is a highly effective hand-operated pump for applications requiring fast transfer of fuels and oils up to SAE30.

- 2m Delivery hose and spout
- Dispenses up to 100L/minute
- Standard 2" BSPM drum thread adaptor & 3 piece suction tube
- Built-in nozzle holder

Suits Drum/Container Size:	60L - 210L Drum
Pump Type:	Manual Rotary
Pump Outlet:	Spout
Pump Max Free Flow Rate:	280ml/rotation
Duty:	Standard

Lever Action Transfer Pump - Steel Construction - Lube Pro (LP0111)



An economy drum pump for simple dispensing applications.

- Dispenses up to 20L/minute
- Standard 2" BSPM drum thread adaptor and extendable suction tube
- Suitable for pumping oil, coolant, diesel and kerosene

Suits Drum/Container Size:	60 - 210L
Pump Type:	Manual Lever
Pump Outlet:	Built-in Spout
Pump Max Free Flow Rate:	350ml/min
Duty:	Standard

Heavy Duty Aluminium Lever Pump - Lube Pro (LP0200)



A heavy duty lever oil pump with high volume output. Suitable for pumping heavy oils

- Dispenses approximately 0.5L per full stroke
- Standard 2" BSPM drum thread adaptor and 3 piece suction tube
- Suitable for pumping oil, coolant, diesel and kerosene

Suits Drum/Container Size:	60 - 210L
Pump Type:	Manual Lever
Pump Outlet:	Built-in Spout
Pump Max Free Flow Rate:	500ml/min
Duty:	Heavy

Lever Operated Oil Transfer Pump - Polypropylene (21022)



A quality yet affordable solution for dispensing oil directly from a drum. Made from polypropylene with nitrile seals, this is a pump that is suitable for dispensing numerous other compatible fluids.

- Built-in spout with gauze filter
- Standard 2" BSPM drum thread adaptor and extendable suction

Suits Drum/Container Size:	60 - 210L
Pump Type:	Manual Lever
Pump Outlet:	Built-in Spout
Pump Max Free Flow Rate:	330ml/min
Duty:	Standard

Telescopic Oil Drainers, Automotive - Lube Pro



Showing product 30080L-K



A highly popular oil drainer for automotive and light commercial applications, which comes with a funnel extension to increase the catchment area.

- 18L collection bowl capacity
- Pneumatic reservoir discharge system through 2m hose

Item No:	30080L	30080L-K
Item Type:	Upright-Telescopic	Upright-Telescopic
Extension Funnel:	N/A	Included
Drain Type:	Gravity	Gravity
Tank Capacity:	80L	80L
Collection Bowl Diameter:	400mm	606mm
Minimum Height:	1050mm	1150mm
Maximum Height:	1630mm	1730mm
Duty:	Standard	Standard

Funnel Extension - Lube Pro (30080L-FE)



Lube Pro oil drainer funnel extension available for all Lube Pro telescopic oil drainers.

Telescopic Oil Drainers, Industrial & Commercial - Lube Pro



A popular oil drainer for commercial oil draining applications, which comes with a funnel extension to increase the catchment area.

- 18L collection bowl capacity
- Pneumatic reservoir discharge system through 2m hose

Related Product:

Lube Pro oil drainer funnel extension available for all Lube Pro telescopic oil Drainers (30080L-FE)



Item No:	30081L	30082L	30083L	30084L
Item Type:	Upright-Telescopic	Upright-Telescopic	Upright-Telescopic	Upright-Telescopic
Extension Funnel:	N/A	Included	N/A	Included
Drain Type:	Gravity	Gravity	Gravity	Gravity
Tank Capacity:	65L	65L	90L	90L
Collection Bowl Diameter:	506mm	606mm	506mm	606mm
Minimum Height:	1100mm	1110mm	1250mm	1250mm
Maximum Height:	1510mm	1610mm	1850mm	1950mm
Duty:	Heavy	Heavy	Heavy	Heavy

Combination Manual/Pneumatic Oil Extractor, 10.5L (MPOSD10)



This combined manual and pneumatic oil suction drainer is suited for a range of oil extraction applications. Suction is created by hand or compressed air.

- Comes with a main suction tube plus 2 extensions
- Not for use with corrosive or flammable liquid
- Automatic cutoff when unit is full

Item Type:	Lube Pro Upright-Suction
Drain Type:	Manual or Pneumatic Suction
Tank Capacity:	10.5L
Suction Speed:	1-2L/min
Duty:	Standard

Combined Gravity & Suction Oil Drainer, 65L (32065L)



Designed for both gravity and suction draining, this unit generates suction using compressed air, and includes a transparent oil quality inspection chamber.

- Includes 6 different suction probes with quick connector
- Gauge displays vacuum pressure
- Not for use with corrosive or flammable liquid

Item Type:	Lube Pro Upright-Telescopic
Drain Type:	Gravity & Pneumatic Suction
Tank Capacity:	65L
Chamber Capacity:	8L
Collection Bowl Diameter:	400mm
Minimum Height:	940mm
Maximum Height:	1500mm
Suction Speed:	1.5-2L/min
Duty:	Heavy

Pantograph Oil Drainer, 70L (34101)



This oil drainer allows the drain pan to be placed under a vehicle, and can suck oil into the tank while draining. This is a great unit for oil changes under a vehicle where a vehicle lift or service pit are not available.

- Can be used with collector pan above the tank when vehicle is on a hoist
- Can be used with collector pan on the ground under vehicle when vehicle is on the ground
- Sucks oil from pan into tank with venturi suction using compressed air - even during draining
- Can operate without continuous air supply

Item Type:	Fiac Upright-Pantograph
Drain Type:	Gravity & Pneumatic Suction
Tank Capacity:	70L
Suction Speed:	1.5-2L/min
Duty:	Heavy

Service Pit Oil Drainer, 65L (RPD65L)



Designed to run along the rails of a service pit, this drainer makes oil changes easy, and helps avoid the clutter of conventional drainers on the pit floor.

- Lift out steel gauze
- Has drain & suction outlets
- Pan Dimensions: L=800mm, W=700mm, H=270mm



Low Level Oil Drainer, 70L (ODT70L)



Excellent for oil changes on machinery, or other applications where the vehicle cannot be raised to allow oil draining.

- Lift out steel gauze
- Has drain & suction outlets
- Dimensions: L=1200mm, W=650mm, H=200mm



Low Level Oil Drainer, 100L (ODT100)



Excellent for oil changes on agricultural machinery, or other applications where the vehicle cannot be raised to allow oil draining.

- Lift out steel gauze
- Has drain & suction outlets
- Dimensions: L=1200mm, W=620mm, H=220mm



Low Level Oil Drainer, 150L (ODT150)



Excellent for oil changes on large agricultural machinery, and other large vehicle applications where it cannot be raised to allow oil draining.

- Lift out steel gauze
- Has drain & suction outlets
- Dimensions: L=1200mm, W=700mm, H=270mm



Round Plastic Funnel - 130mm (FRP05)



This funnel has a highly flexible spout 530mm in length for getting fluid into hard to reach areas with a capacity of 500ml and a flexible spout length of 530mm.



Round Plastic Funnel - 100mm (FRP14)



This funnel has a semi-flexible spout, and caps for both top & bottom openings to keep contaminants out and drips in when not in use with a funnel capacity of 1.4L, semi-flexible spout and screw-on caps.



Round Plastic Funnel - 100mm (FRP16)



This funnel has a high flow semi-flexible spout, and caps for both top & bottom openings to keep contaminants out and drips in when not in use with a funnel capacity of 1.6L, semi-flexible high flow spout and screw-on caps.



Round Galvanised Steel Funnel - 160mm (FRS10)



Steel funnel to assist with manual fluid transfers, and helping to avoid those nuisance spills.



Rectangle Plastic Locking Funnel (FSP15L)



This funnel has ribs on the spout which help it to lock in place and keep it steady while pouring.



Rectangle Plastic Funnel (FSP30)



Plastic funnel to assist with manual fluid transfers, and helping to avoid nuisance spills.



Drum Funnel for 200L Drums (DF200)



Make pouring fluids into drums easy with this large, full diameter drum funnel. Includes lid to assist in keeping the area clean.

Drum Funnel for 200L (DF200)



Plastic Oil Catchment Pan, 6L (OCT6L)



This plastic oil catchment pan is a handy accessory for avoiding spills and keeping the work area clean when draining oil or other fluids.



Oil Catchment Pan with Lid, 14L (OCTS14L)



This plastic oil catchment pan with lid is a handy accessory for collecting fluids, and safely transferring them to another location for emptying.



Brass Inline Waste Oil Strainer



Inline filters for use on 20, 25 an 50mm waste oil suction lines after main strainer unit. These fine strainers removes remaining particles too large to enter pump.



Item No:	IS20B	IS25B	IS50B
Size:	20mm	25mm	50mm

Waste Oil Filter Assembly (FWO25-16S)



Filter for use on suction side of waste oil pumps to remove particles and protect pump from damage.



4 Way Evacuation Valve (EV25-4)



Suitable for oil, diesel, antifreeze and waste oil, this 4-way evac valve is used for switching suction and discharge, eliminating the need for multiple valves. Ideal for applications where 1 pump does both filling and dispensing duties.

- 1" Ports
- 200psi / 13.8bar op. pressure



Steel Self Bunded Oil Tanks



Manufactured as 2 tanks in 1, the inner tanks are made from blow moulded high-density polyethylene (HDPE), while the outer tanks are made from steel sheet which is galvanised on both sides with a high quality polymer seal.

The steel sheets are roll-joined and then pressed using sealant, which creates a leak proof seam, and the HDPE tanks are then enclosed in the steel outer tanks.

- Has 4 entry ports on top of tank
- Includes level gauge
- Includes leak detection sensor between inner and outer skin
- Lightweight when empty allowing for easy manoeuvring
- 5 Year manufacturers warranty
- Not suitable for outdoor use
- Custom modified to better suit New Zealand conditions



Item No:	TST400	TST620	TST750	TST1000D	TST1500
Tank Capacity:	400L	620L	750L	1000L	1500L
Containment Type:	Primary & Secondary	Primary & Secondary	Primary & Secondary	Primary & Secondary	Primary & Secondary
Tank Entry Ports:	2" BSPF x 4	2" BSPF x 4	2" BSPF x 4	2" BSPF x 4	2" BSPF x 4
Dimensions (LxWxH):	750x690x1175	750x690x1615	1000x760x1370	1100x705x1610	1650x755x1870
Item Weight:	46Kg	60Kg	67Kg	76Kg	133Kg

Steel Self Bunded Waste Oil Tanks



Premium quality double bunded tanks which meets or exceeds New Zealand standards for waste oil storage, and is suitable for outdoor applications. In addition to compliance with increasing regulations, these tanks also offer unparalleled functionality for installation, use and is easy to move due to its forklift friendly base.

- 4 x 2" BSP ports inside weatherproof, contained connection box
- 2 x 1" BSP interstitial ports with leak detection sensor installed in 1 port
- Includes level gauge and breather
- Large manway for accessing tank
- Minimum 110% bund capacity
- Premium 2 pack painted finish
- Additional sizes available - Please enquire


Related Products:

1:1 Orion Waste Oil Stub (O-22802)



1/2 Lube Pro Double Diaphragm (PDDP15-45)



Item No:	TSW20	TSW25	TSW30	TSW40	TSW50
Tank Capacity:	2000L	2500L	3000L	4000L	4990L
Containment Type:	Primary	Primary	Primary	Primary	Primary
Tank Entry Ports:	2" BSPF x 4	2" BSPF x 4	2" BSPF x 4	2" BSPF x 4	2" BSPF x 4
Weight:	575Kg	665Kg	760Kg	965Kg	1050Kg
Dimensions (LxWxH):	1620x1255x1350	1900x1255x1350	2350x1255x1350	2106x1605x1700	2320x1605x1820

Plastic Bunded Waste Oil Tanks



At 1,000L this tank is the largest plastic waste oil tank allowed under New Zealand's general waste oil storage legislation. Featuring a large access lid, and all labeling required to satisfy NZ regulations, this economy tank and bund is used for waste oil storage in many small to medium sized workshop applications.

- Large access lid
- Drain tray insert inside access lid for preventing large objects from getting into tank
- Minimum 110% bund capacity
- Only 1 tank is permitted per site

Item No:	PTB500ASSY	PTB1000RPASSY
Item Type:	Double Bunded Plastic Waste Oil Tank	Double Bunded Plastic Waste Oil Tank
Rainproof:	No	Yes
Tank Capacity:	500L	1000L
Containment Type:	Primary	Primary
Tank Entry Ports:	2" BSPF x 2	2" BSPF x 2
Dimensions (LxWxH)	1250mm x 810mm	1250mm x 1385mm

Plastic Bunded Waste Oil Tank Assembly



Featuring a large access lid, level indicator float, suction tube & camlock connection for emptying, and all labeling required to satisfy NZ regulations, this economy tank and bund assembly is used for waste oil storage in many small to medium sized workshop applications.

- Large access lid
- Drain tray insert inside access lid for preventing large objects from getting into tank
- Minimum 110% bund capacity
- Suction assembly with camlock
- Level indicator float
- Only 1 tank is permitted per site

Item No:	PTB500ASSY/ST/FLT	PTB1000RPASSY/ST/FLT
Item Type:	Double Bunded Plastic Waste Oil Tank	Double Bunded Plastic Waste Oil Tank
Rainproof:	No	Yes
Tank Capacity:	500L	1000L
Containment Type:	Primary	Primary
Tank Entry Ports:	2" BSPF x 1 Spare	2" BSPF x 1 Spare
Dimensions (LxWxH)	1250mm x 810mm	1250mm x 1385mm

1:1 Waste Oil Transfer Pump, Stub Length - Orion (O-22802)

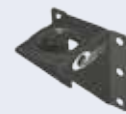


This specialist pump is specifically designed for waste oil transfer where the pumping distance does not exceed 15m.

- Stub pump, suits pipe and wall mounting applications
- Heavy duty

Related Product:

Orion Stub Pump Mounting Bracket
(O-28524)



Suits Drum/Container Size:	Variable
Air Inlet Pressure:	4-10bar / 60-145psi
Pump Max Output Pressure:	10bar / 145psi
Pump Max Free Flow Rate:	18L/min
Pump Outlet:	3/4" BSPF

5:1 Waste Oil Transfer Pump, Stub Length (O-22575)



This specialist pump is specifically designed for waste oil transfer from the workshop to storage tanks in large installations where long distance pumping is required.

- Anti-race mechanism to avoid cavitation
- Built in thermal relief protection valve
- Heavy Duty

Related Product:

Orion Stub Pump Mounting Bracket
(O-28524)



Suits Drum/Container Size:	Variable
Air Inlet Pressure:	4-10bar / 60-145psi
Pump Max Output Pressure:	50bar / 725psi
Pump Max Free Flow Rate:	38L/min
Pump Outlet:	3/4" BSPF

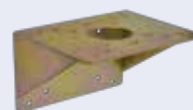
1/2" Double Diaphragm Pumps, 50L/Min



Versatile air operated double diaphragm pumps commonly used for waste oil applications, but are suitable for other fluids and chemicals as well.

- Viton seal pump is suitable for chemical and food grade applications
- Nitrile seal pump with aluminium body is suitable for oil applications

Related Product:
Wall Mount Bracket (PDDP-B1)



Item No:	PDDP15-45	PDDP15-45V
Air Inlet Pressure:	3-8bar / 45-115psi	3-8bar / 45-115psi
Pump Max Output Pressure:	8bar / 115psi	8bar / 115psi
Pump Max Free Flow Rate:	50L/min	50L/min
Pump Outlet:	1/2" BSPF	1/2" BSPF
Seals & Diaphragms:	Nitrile	Viton
Body Material:	Aluminium	Polypropylene

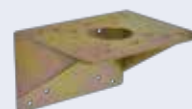
3/4" Double Diaphragm Pumps, 62L/Min



These highly versatile air operated transfer pumps are suitable for pumping many fluids including water, many chemicals and food grade applications.

- Viton seal pump is suitable for chemical and food grade applications
- Nitrile seal pump with aluminium body is suitable for oil applications

Related Product:
Wall Mount Bracket (PDDP-B1)



Item No:	PDDP20-60	PDDP20-60V
Air Inlet Pressure:	3-8bar / 45-115psi	3-8bar / 45-115psi
Pump Max Output Pressure:	8bar / 115psi	8bar / 115psi
Pump Max Free Flow Rate:	62L/min	62L/min
Pump Outlet:	3/4" BSPF	3/4" BSPF
Seals & Diaphragms:	Nitrile	Viton
Body Material:	Aluminium	Polypropylene

1" Double Diaphragm Pumps, 90L/Min - Lube Pro

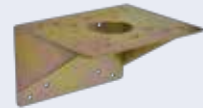


These Lube Pro air operated double diaphragm pumps are ideal for high volume transfer applications, suited for dispensing of oil, waste oil, chemicals and other fluids.

- For more pumping of more viscous fluids, please refer to 22310

Related Product:

Wall Mount Bracket (PDDP-B1)



Item No:	PDDP1-90	PDDP1-90V
Air Inlet Pressure:	3-8bar / 45-115psi	3-8bar / 45-115psi
Pump Max Output Pressure:	8bar / 115psi	8bar / 115psi
Pump Max Free Flow Rate:	90L/min	90L/min
Pump Outlet:	1" BSPF	1" BSPF
Seals & Diaphragms:	Nitrile	Viton
Body Material:	Aluminium	Aluminium

1" Double Diaphragm Pump, 100L/Min - Orion (O-22310)



Designed for high flow and low pressure fluid transfer applications, this pneumatic pump is particularly well suited for the transfer of high viscosity oils and other fluids. Suitable for pumping oil, diesel and other non-corrosive fluids.

- Fully bolted & serviceable construction

Recommended for use with these pumps, a MP10-FRL-AD air filter regulator lubricator to protect pump internals from damage



Pump Type:	Pneumatic
Air Inlet Pressure:	3-10bar / 45-145psi
Pump Max Output Pressure:	7bar / 100psi
Pump Max Free Flow Rate:	100L/min
Pump Outlet:	1" BSPF
Seals & Diaphragms:	Nitrile
Body Material:	Aluminium

Double Diaphragm Pumps - Meclube



High quality and premium products, these air-operated double diaphragm pumps are well suited for the transfer of clean oil, waste oil, diesel fuel and many other fluids.

Recommended for use with these pumps, a MP10-FRL-AD air filter regulator lubricator to protect pump internals from damage



Item No:	M-028A110AB1	M-028A170AB1
Air Inlet Pressure:	3-8bar / 45-115psi	3-8bar / 45-115psi
Pump Max Output Pressure:	8bar / 115psi	8bar / 115psi
Pump Max Free Flow Rate:	110L/min	170L/min
Fluid Inlet & Outlet Size:	3/4" BSPF	1" BSPF
Seals & Diaphragms:	Nitrile	Nitrile
Body Material:	Aluminium	Aluminium

1" Double Diaphragm Pump - Meclube (M-028170AB1-TP)



A high quality, premium product, this air operated double diaphragm pump is designed for high flow applications and can pump many different types of fluids. This unique pump allows for the simultaneous transfer of two separate fluids.

- Max flow rate of 85L per minute per fluid

Recommended for use with these pumps, a MP10-FRL-AD air filter regulator lubricator to protect pump internals from damage



Pump Type:	Pneumatic
Air Inlet Pressure:	3-8bar / 45-115psi
Pump Max Output Pressure:	8bar / 115psi
Pump Max Free Flow Rate:	170L/min (Total of both ports)
Pump Outlet:	1" BSPF
Seals & Diaphragms:	Nitrile
Body Material:	Aluminium

Self Closing Drum Tap, 3/4" BSP(EU100DF)



A basic self closing valve for dispensing direct from the container. Made of zinc plated steel, with a 3/4" BSP connection.

Aluminum Drum Tap (EU200DF)



Self Closing Drum Tap, 3/4" BSP(EU101DF)



A self closing valve for dispensing direct from the container. Made of cast brass, includes an inlet filter, and has a 3/4" BSP connection.



Self Closing Drum Tap, 2" BSP(EU200DF)



A basic self closing valve for dispensing direct from the drum. Made of aluminium, with a 2" BSP connection.



Drum Tap, 2" BSP (DTP2)



A simple plastic drum tap for direct dispensing of oils and other fluids. Made from Polyethylene.

Aluminum Drum Tap (EU200DF)



Self Closing Gate Valve, 2" (EU500GV)



This heavy duty self closing gate valve has many uses across a broad range of industries. Made of cast brass and has a 2" BSP connection.



Aluminum Drum Opener Wrench (ADW4021)



LUBE Pro
Professional Lubrication Equipment

This drum opener wrench is a handy tool for opening bungs on drums. Make opening drums safer and easier with the right tool for the job.

WAVE KIT (KIT) OIL BAR (245091)

Drum Level Gauge, 3/4" Connection (LG210)



LUBE Pro
Professional Lubrication Equipment

A quality drum level gauge with a large easy to read face, this gauge fits into the 3/4" bung hole in the top of the drum. Suits both 60L and 210L drums.

Economy Drum Level Gauge, 3/4" Connection (LG210A)



LUBE Pro
Professional Lubrication Equipment

This is an economy drum level gauge which threads into the 3/4" port on the top of the drum. Suits 200-210L drums only.

Round Plastic Funnel - 130mm (FRP05)



This funnel has a highly flexible spout 530mm in length for getting fluid into hard to reach areas with a capacity of 500ml and a flexible spout length of 530mm.



Round Plastic Funnel - 100mm (FRP14)



This funnel has a semi-flexible spout, and caps for both top & bottom openings to keep contaminants out and drips in when not in use with a funnel capacity of 1.4L, semi-flexible spout and screw-on caps.



Round Plastic Funnel - 100mm (FRP16)



This funnel has a high flow semi-flexible spout, and caps for both top & bottom openings to keep contaminants out and drips in when not in use with a funnel capacity of 1.6L, semi-flexible high flow spout and screw-on caps.



Round Galvanised Steel Funnel - 160mm (FRS10)



Steel funnel to assist with manual fluid transfers, and helping to avoid those nuisance spills.



Rectangle Plastic Locking Funnel (FSP15L)



This funnel has ribs on the spout which help it to lock in place and keep it steady while pouring.



Rectangle Plastic Funnel (FSP30)



Plastic funnel to assist with manual fluid transfers, and helping to avoid nuisance spills.



Oil Measuring Jugs



Measuring jugs to facilitate greater accuracy for manual oil dispenses.

- Includes screw on lid, and cap for end of spout
- Made of polyethylene

Item No:	323320010A	323320027A	323320058A
Capacity	1L	2L	5L

Drum Heaters



Improve the dispensing performance of oils and grease in cold weather by attaching this heater to the drum.

- Suitable for steel drums only
- Runs on 230V single phase mains power supply
- 1200 watt
- Includes adjustable thermostat
- Made in the USA

Item No:	EDH55	EDH205
Suits Drum Size:	50-60L	180-220L
Wattage:	700w	1200w

Steel Oil Can 250ml - Rigid Outlet (MCO250-R)



This oil can has a maximum capacity of over 250ml, and comes with a rigid outlet spout.



Steel Oil Can 250ml - Flexi Outlet (MCO250-F)



This oil can has a maximum capacity of over 250ml, and comes with a flexible outlet spout.



Steel Oil Can 450ml - Rigid Outlet (MCO450-R)



This oil can has a maximum capacity of at least 450ml, and comes with a rigid outlet spout.



Steel Oil Can 450ml - Flexi Outlet (MCO450-F)



This oil can has a maximum capacity of at least 450ml, and comes with a flexible outlet spout.





GREASE EQUIPMENT



Pumps & Pump Kits	68	Greasing Accessories	94
Stationary Greasing Kits	75	Single Point Lubricators	97
Mobile Greasing Kits	78	Single Point Lubricator Accessories	99
Manual Pumps & Kits	80		
Dispensing Reels	83		
Dispensing Handpieces	86		
Metering Equipment	87		
Grease Guns	88		
Air Operated Grease Guns	92		
Battery Operated Grease Guns	93		

50:1 Pneumatic Grease Pumps & Kits, 18-60Kg - Lube Pro



Quality, standalone 50:1 pneumatic grease pumps suited for most standard greasing applications, and suitable for grease pail sizes ranging from 16 - 60Kg.

Available Pump Kits:

- With follower plate and drum cover - Page 72
- With follower plate, drum cover & dispensing nozzle - Page 75



Item No:	10048L	10074L
Suits Drum/Container Size:	18-20Kg	50-60Kg
Air Inlet Pressure:	5-8bar / 70-115psi	5-8bar / 70-115psi
Pump Max Output Pressure:	400bar / 5800psi	400bar / 5800psi
Pump Max Free Flow Rate:	800g/min	800g/min
Duty:	Standard	Standard
Pump Outlet:	1/4" BSPM	1/4" BSPM

50:1 Pneumatic Grease Pump, 180/220Kg (10095L) - Lube Pro



A heavy duty 50:1 pneumatic grease pump suited for many industrial high flow greasing applications, and suitable for grease drum sizes ranging from 180-220Kg.

Available Pump Kits

- With follower plate and drum cover - Page 72
- With follower plate, drum cover & dispensing nozzle - Page 75



Suits Drum/Container Size	180-220Kg
Air Inlet Pressure:	5-12bar / 70-175psi
Pump Max Output Pressure:	600bar / 8700psi
Pump Max Free Flow Rate:	1800g/min
Duty:	Heavy
Pump Outlet:	1/4" BSPF

75:1 Pneumatic Grease Pumps - Lube Pro



Heavy duty 75:1 pneumatic grease pumps suited for ultra-high pressure industrial greasing applications.

Recommended for use with these pumps, a MP10-FRL-AD air filter regulator lubricator is recommended to protect pump internals from damage



Item No:	10057L	10097L
Suits Drum/Container Size:	18-20Kg	180-220Kg
Air Inlet Pressure:	5-12bar / 70-115psi	5-12bar / 70-115psi
Pump Max Output Pressure:	900bar / 13050psi	900bar / 13050psi
Pump Max Free Flow Rate:	1600g/min	1600g/min
Duty:	Heavy	Heavy
Pump Outlet:	3/8" BSPF	3/8" BSPF

Follower Plates



Follower plates are used to help maintain the prime of the grease pump, and are required for use with all greases except thin liquid greases in warmer climates (although it is still recommended to use them in these applications to avoid potential problems).

The follower plate sits on top of the grease and creates a seal which ensures that grease is not left on the sides of the drum, and prevents air pockets from forming around the pump suction area.



Item No:	GFPF295	GFPF330	GFPF365	GFPF390	GFPF590
Suits Drum Internal Diameter:	260-295mm	295-330mm	330-365mm	365-390mm	560-590mm

60:1 Pneumatic Grease Pumps - Meclube



Heavy duty and high pressure 60:1 pneumatic grease pumps, designed for commercial workshop applications, and suitable for grease drum sizes ranging from 18 - 220Kg.

These pumps are also excellent options as stand-alone pumps to replace old equipment where the drum cover and follower plate suits the size of the pump suction tube.

Available Pump Kits:

With follower plate and drum cover - Page 73

With follower plate, drum cover & dispensing nozzle - Page 76



Recommended for use with these pumps, a MP10-FRL-AD air filter regulator lubricator is recommended to protect pump internals from damage



Item No:	M-0101005	M-0101010	M-0101015
Suits Drum/Container Size:	18-20Kg	50-60Kg	180-220Kg
Air Inlet Pressure:	6-8bar / 85-115psi	6-8bar / 85-115psi	6-8bar / 85-115psi
Pump Max Output Pressure:	480bar / 6960psi	480bar / 6960psi	480bar / 6960psi
Pump Max Free Flow Rate:	1600g/min	1600g/min	1600g/min
Duty:	Heavy	Heavy	Heavy
Pump Outlet:	1/4" BSPM	1/4" BSPM	1/4" BSPM

60:1 Pneumatic Grease Pumps - Orion



Heavy duty, stand-alone 60:1 pneumatic grease pumps designed for maintaining good flow at high pressure. These pumps are suitable for drum sizes ranging from 50 - 220Kg and is well suited for the majority of commercial and industrial greasing applications.

Available Pump Kits:

With follower plate and drum cover - Page 74

With follower plate, drum cover & dispensing nozzle - Page 77

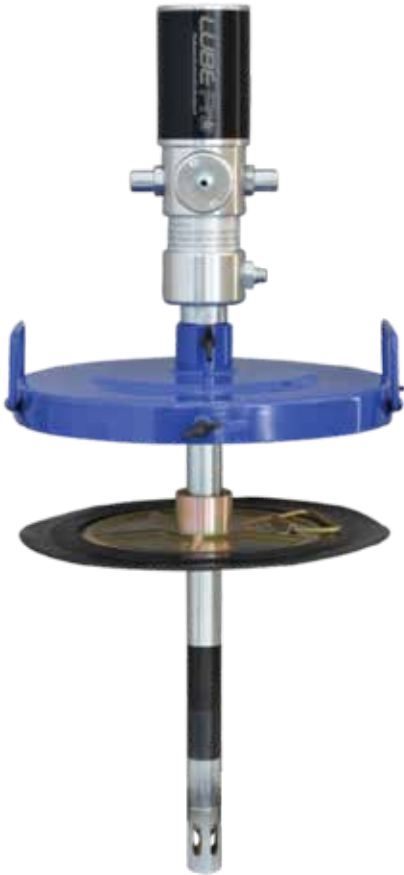


Recommended for use with these pumps, a MP10-FRL-AD air filter regulator lubricator is recommended to protect pump internals from damage



Item No:	O-12751	O-12752
Suits Drum/Container Size:	50-60Kg	180-220Kg
Air Inlet Pressure:	4-10bar / 60-145psi	4-10bar / 60-145psi
Pump Max Output Pressure:	600bar / 8700psi	600bar / 8700psi
Pump Max Free Flow Rate:	1000g/min	1000g/min
Duty:	Heavy	Heavy
Pump Outlet:	3/8" BSPF	3/8" BSPF

50:1 Pneumatic Grease Pump Kits - Lube Pro



These grease pumps are designed for grease drums in applications where it will be connected to an existing hose or pipework. This is an effective and popular choice for the majority of automotive greasing applications.

- These kits include a 50:1 pneumatic grease pump, drum cover and follower plate

Available Pump Kits:

Stand-alone pump - Page 68

With follower plate, drum cover & dispensing nozzle - Page 75



Recommended for use with these pumps, a MP10-FRL-AD air filter regulator lubricator is recommended to protect pump internals from damage



Item No:	10048L-PK	10074L-PK1	10074L-PK2	10095L-PK
Suits Drum/Container Size:	18-20Kg	50-55Kg	55-60Kg	180-220Kg
Air Inlet Pressure:	5-8bar / 70-115psi	5-8bar / 70-115psi	5-8bar / 70-115psi	5-12bar / 70-175psi
Pump Max Output Pressure:	400bar / 5800psi	400bar / 5800psi	400bar / 5800psi	600bar / 8700psi
Pump Max Free Flow Rate:	800g/min	800g/min	800g/min	1800g/min
Duty:	Standard	Standard	Standard	Heavy
Pump Outlet:	1/4" BSPM	1/4" BSPM	1/4" BSPM	1/4" BSPF

60:1 Pneumatic Grease Pump Kits - Meclube



Heavy duty, high pressure grease pump kits, suited for grease drum sizes 18 - 220Kg.

These pump kits are ideal for high usage, heavy duty industrial and commercial applications.

- These kits include a 60:1 pneumatic grease pump, drum cover and follower plate

Available Pump Kits:

Stand-alone pump - Page 70

With follower plate, drum cover & dispensing nozzle
- Page 76



Recommended for use with these pumps, a MP10-FRL-AD air filter regulator lubricator is recommended to protect pump internals from damage



Item No:	M-0101005-PK	M-0101010-PK1	M-0101010-PK2	M-0101015-PK
Suits Drum/Container Size:	18-20Kg	50-55Kg	55-60Kg	180-220Kg
Air Inlet Pressure:	6-8bar / 85-115psi	6-8bar / 85-115psi	6-8bar / 85-115psi	6-8bar / 85-115psi
Pump Max Output Pressure:	480bar / 6960psi	480bar / 6960psi	480bar / 6960psi	480bar / 6960psi
Pump Max Free Flow Rate:	1600g/min	1600g/min	1600g/min	1600g/min
Duty:	Heavy	Heavy	Heavy	Heavy
Pump Outlet:	1/4" BSPM	1/4" BSPM	1/4" BSPM	1/4" BSPM

60:1 Pneumatic Grease Pump Kits - Orion



Heavy duty grease pump kits designed for supplying high pressure workshop greasing systems from 55 - 220Kg.

These kits are good options for commercial and industrial workshops where multiple outlets are used at the same time.

- These kits include a 60:1 pneumatic grease pump, drum cover and follower plate

Available Pump Kits:

Stand-alone pump - Page 71

With follower plate, drum cover & dispensing nozzle - Page 77



Recommended for use with these pumps, a MP10-FRL-AD air filter regulator lubricator is recommended to protect pump internals from damage



Item No:	O-12751PK	O-12752PK
Suits Drum/Container Size:	50-60Kg	180-220Kg
Air Inlet Pressure:	4-10bar / 60-145psi	4-10bar / 60-145psi
Pump Max Output Pressure:	600bar / 8700psi	600bar / 8700psi
Pump Max Free Flow Rate:	1000g/min	1000g/min
Duty:	Heavy	Heavy
Pump Outlet:	3/8" BSPF	3/8" BSPF

50:1 Pneumatic Grease Pump Kits - Lube Pro



Quality and highly popular air operated grease dispensing kits which are suitable for most standard greasing applications from 18 - 220Kg.

- These kits include a 50:1 pneumatic grease pump, drum cover, follower plate, 4m hose, z-swivel and grease dispensing handpiece

Available Pump Kits:

- Stand-alone pump - Page 68
- With follower plate & drum cover - Page 72



Recommended for use with these pumps, a MP10-FRL-AD air filter regulator lubricator is recommended to protect pump internals from damage



Item No:	15125L	15145L-1	15145L	15195L
Suits Drum/Container Size:	18-20Kg	50-55Kg	55-60Kg	180-220Kg
Air Inlet Pressure:	5-8bar / 70-115psi	5-8bar / 70-115psi	5-8bar / 70-115psi	5-12bar / 70-175psi
Pump Max Output Pressure:	400bar / 5800psi	400bar / 5800psi	400bar / 5800psi	600bar / 8700psi
Pump Max Free Flow Rate:	800g/min	800g/min	800g/min	1800g/min
Duty:	Standard	Standard	Standard	Heavy
Suits Drum Internal Dia.	270-305mm	335-365mm	365-410mm	540-580mm

60:1 Pneumatic Grease Pump Kits - Meclube



Heavy duty, high pressure grease pump kits, suited for grease drum sizes 18 - 220Kg. These pump kits are ideal for high usage, heavy duty industrial and commercial applications.

- These kits include a 60:1 pneumatic grease pump, drum cover, follower plate, 4m hose, z-swivel and grease dispensing handpiece

Available Pump Kits:

Stand-alone pump - Page 70

With follower plate & drum cover - Page 73



Recommended for use with these pumps, a MP10-FRL-AD air filter regulator lubricator is recommended to protect pump internals from damage



Item No:	15125M	15145M-1	15145M	15195M
Suits Drum/Container Size:	18-20Kg	50-55Kg	55-60Kg	180-220Kg
Air Inlet Pressure:	6-8bar / 85-115psi	6-8bar / 85-115psi	6-8bar / 85-115psi	6-8bar / 85-115psi
Pump Max Output Pressure:	480bar / 6960psi	480bar / 6960psi	480bar / 6960psi	480bar / 6960psi
Pump Max Free Flow Rate:	1600g/min	1600g/min	1600g/min	1600g/min
Duty:	Heavy	Heavy	Heavy	Heavy
Suits Drum Internal Dia.	270-305mm	335-365mm	365-410mm	540-580mm

60:1 Pneumatic Grease Pump Kits - Orion



Heavy duty grease pump kits designed for supplying high pressure workshop greasing systems from 55 - 220Kg. These kits are good options for commercial and industrial workshops where multiple outlets are used at the same time.

- These kits include a 60:1 pneumatic grease pump, drum cover, follower plate, z-swivel and grease dispensing handpiece.

Available Pump Kits:

Stand-alone pump - Page 71

With follower plate & drum cover - Page 74



Recommended for use with these pumps, a MP10-FRL-AD air filter regulator lubricator is recommended to protect pump internals from damage



Item No:	O-12751K	O-12752K
Suits Drum/Container Size:	50-60Kg	180-220Kg
Air Inlet Pressure:	4-10bar / 60-145psi	4-10bar / 60-145psi
Pump Max Output Pressure:	600bar / 8700psi	600bar / 8700psi
Pump Max Free Flow Rate:	1000g/min	1000g/min
Duty:	Heavy	Heavy
Suits Drum Internal Diameter:	365-410mm	540-580mm

50:1 Mobile Greasing Kits - Lube Pro



These mobile grease kits are perfect for easy mobility and popular for mobile greasing applications where 18 - 220Kg pails are being used.

- These kits include a 50:1 pneumatic grease pump, drum cover, follower plate, 4m hose, z-swivel, grease dispensing handpiece and trolley.

Related Product:

Non-mobile greasing kits
- Page 72



Showing product
15130L



Showing product
15150L

Item No:	15130L	15131L	15150L-1	15150L	15200L
Suits Drum Size:	18-20Kg	18-20Kg	50-55Kg	55-60Kg	180-220Kg
Air Inlet Pressure:	5-8bar / 70-115psi	5-8bar / 70-115psi	5-8bar / 70-115psi	5-8bar / 70-115psi	5-12bar / 70-175psi
Pump Max Output Pressure:	400bar / 5800psi	400bar / 5800psi	400bar / 5800psi	400bar / 5800psi	600bar / 8700psi
Pump Max Free Flow Rate:	800g/min	800g/min	800g/min	800g/min	1800g/min
Duty:	Standard	Standard	Standard	Standard	Heavy
Trolley Type:	2 Wheel (2WDT20)	4 Wheel (70050)	4 Wheel (70050)	4 Wheel (70050)	4 Wheel (70200)

60:1 Mobile Greasing Kits - Meclube



These mobile grease kits are ideal for commercial and high usage applications where 18 - 220Kg grease pails are being used.

- These kits include a 60:1 pneumatic grease pump, drum cover, follower plate, 4m hose z-swivel, grease dispensing handpiece and trolley.

Related Product:

Non-mobile greasing kits
- Page 73



Showing product
15130M



Showing product
15150M

Item No:	15130M	15131M	15150M-1	15150M	15200M
Suits Drum Size:	18-20Kg	18-20Kg	50-55Kg	55-60Kg	180-220Kg
Air Inlet Pressure:	6-8bar / 85-115psi	6-8bar / 85-115psi	6-8bar / 85-115psi	6-8bar / 85-115psi	6-8bar / 85-115psi
Pump Max Output Pressure:	480bar / 6960psi	480bar / 6960psi	480bar / 6960psi	480bar / 6960psi	480bar / 6960psi
Pump Max Free Flow Rate:	1600g/min	1600g/min	1600g/min	1600g/min	1600g/min
Duty:	Heavy	Heavy	Heavy	Heavy	Heavy
Trolley Type:	2 Wheel (2WDT20)	4 Wheel (70050)	4 Wheel (70050)	4 Wheel (70050)	4 Wheel (70200)

Mini Grease Kit - 2.5Kg (MGK2.5)



This manual kit suits 2.5Kg grease pails and is designed to fit directly to 2.5Kg grease pails, and the sprung plunger charges the delivery hose with grease at low pressure. Pressure is generated within the hand piece by squeezing the trigger handle.

- Foot operated spring plunger pump
- Pump holds pressure in system allowing for multiple discharges before re-operating the pump
- Up to 30 shots per plunger action
- Selectable high pressure / high flow delivery

Suits Drum Size:	2.5Kg Pail
Pump Type:	Sprung Piston
Pump Max Output Pressure:	690bar/10000psi
Pump Max Free Flow Rate:	1.25g/shot
Hose Size & Length:	1/2" x 3m
Duty:	Standard
Components:	Pump, Drum Cover, Follower Plate, 3m Hose, Booster Control Valve

T-Handle Grease Kit - 18/20Kg (MGK20T)



This manual kit suits 18/20Kg grease pails, and is capable of grease delivery pressures up to 10,000psi. This kit is designed to fit directly to 18-20Kg grease pails, and the sprung T-handle plunger charges the delivery hose with grease at low pressure. Pressure is generated within the hand piece by squeezing the trigger handle.

- Pump holds pressure in system allowing for multiple discharges before re-operating the pump
- Up to 30 shots per plunger action
- Selectable high pressure / high flow delivery

Suits Drum Size:	18-20Kg
Pump Type:	Lever Action
Pump Max Output Pressure:	690bar / 10000psi
Pump Max Free Flow Rate:	1.25g/shot
Hose Size & Length:	1/2" x 3m
Duty:	Standard
Components:	Pump, Drum Cover, Follower Plate, 3.0m Hose, Booster Control Valve

Manual Lever Action Grease Kit - 18/20Kg (15016L)



This manually operated lever action grease kit facilitates easy manual greasing direct from a 18 - 20Kg grease pail.

An economical and portable manual grease kit which is suited for dispensing grades of grease up to NLGI 2.

Suits Drum Size:	18-20Kg
Pump Type:	Lever Action
Pump Max Output Pressure:	345bar / 5000psi
Pump Max Free Flow Rate:	4g/stroke
Hose Size & Length:	1/4" x 1.8m
Duty:	Standard
Components:	Pump, Drum Cover, Follower Plate, 1.8m Hose, Control Valve

Grease Reservoir Filler Pump - 18/20Kg (O-11711)



A premium quality hand transfer pump for bulk filling grease guns via the bulk fill nipple on the grease gun. This pump is suitable for pumping NLGI grade 1 & 2 greases. This allows grease which is bought in bulk in the form of pails to be used in grease guns, removing the need to purchase grease cartridges and in turn creating cost savings.

- Includes loader couplers to suit 9 and 12mm nipples
- Suits 18 - 20Kg pails from 265 - 295mm internal diameter

Suits Drum Size:	18-20Kg Drums
Pump Type:	Lever Action
Pump Max Output Pressure:	Minimal - Transfer Only
Pump Max Free Flow Rate:	50g/stroke
Hose Size & Length:	None
Dispensing Nozzle:	Spout with filler coupling
Duty:	Heavy
Components:	Pump, Drum Cover, Follower Plate, Outlet Spigot

Grease Reservoir Filler Pump - 16/20Kg (O-11713)



A hand transfer pump for refilling auto-greasing reservoirs on trucks & machines. This pump is used for refilling automatic greasing reservoirs on trucks and heavy machinery. Does not include any connection coupler. QRC couplers to suit Groeneveld reservoir connectors are available separately on request.

- 1.5m outlet hose with 1/4" BSPM connection on end
- Follower plate not included - see GFPP295 (Page 69) if required (will be needed to pump non-liquid greases).

Suits Drum Size:	16-20Kg
Pump Type:	Lever Action
Pump Max Output Pressure:	Minimal - Transfer Only
Pump Max Free Flow Rate:	50g/stroke
Hose Size & Length:	1/2" x 1.5m
Dispensing Nozzle:	None
Duty:	Standard
Components:	Pump, Drum Cover, Hose

Grease Reservoir Filler Pump - 18/20Kg (M-0161152020)



A heavy duty hand grease transfer pump kit for refilling auto-greasing reservoirs on trucks and machines. Suits grease buckets with a maximum ID of 305mm.

- Supplied fittings for end of hose include both male and female QRC fittings, and outlet spout with shut-off valve

Suits Drum Size:	18-20Kg Drums
Pump Type:	Lever Action
Pump Max Output Pressure:	Minimal - Transfer Only
Pump Max Free Flow Rate:	40g/stroke
Hose Size & Length:	1/2" x 2m
Dispensing Nozzle:	Various Options
Duty:	Heavy
Components:	Pump, Drum Cover, Hose Sprung Follower Plate & Assorted Outlet Fittings

Grease Hose Reel - 1/4" x 15m - Lube Pro (61015L)



This spring retract grease hose reel is ideal for standard workshop greasing applications. This is an economy reel, yet is still well suited to automotive and light commercial workshop applications.

Related Product:
Swivel Bracket (62015L-SB)



Fluid or Medium Type:	Grease
Hose Size & Length:	1/4" x 15m
Max Operating Pressure:	400bar / 5800psi
Outlet Connection:	1/4" BSPM
Mounting Type:	Fixed Base
Duty:	Standard

Medium Duty Grease Reels - Orion



Catering to moderate duty grease dispensing operations, this is a highly popular moderate duty spring retract grease hose reel, and performs well for a wide variety of grease dispensing applications.

- Single arm hose guide
- 2 Year warranty

Related Product:
Swivel Bracket (O-28913)



Item No:	O-15212	O-15225
Fluid or Medium Type:	Grease	Grease
Hose Size & Length:	1/4" x 10m	3/8" x 15m
Outlet Connection:	1/4" BSPM	3/8" BSPM
Max Operating Pressure:	400bar / 5800psi	400bar / 5800psi
Base Mounting:	Fixed	Fixed
Duty:	Medium	Medium

Heavy Duty Grease Reel - 3/8" x 15m - Orion (O-15125)



This auto-retract heavy duty grease dispensing hose reel is one of the most robust grease reels of this class on the market and is excellent for high pressure, high use applications, and also mobile applications.

- Easily adjustable guide arm
- 2 Year warranty

Related Product:

Swivel Bracket (O-28913)



Fluid or Medium Type:	Grease
Hose Size & Length:	3/8" x 15m
Max Operating Pressure:	400bar / 5800psi
Outlet Connection:	3/8" BSPF
Mounting Type:	Fixed Base
Duty:	Heavy

Heavy Duty Grease Reel - 3/8" x 25m (M-0701407325)



A heavy duty self retracting grease hose reel with 25m of high pressure grease hose, which is well suited to industrial applications in demanding environments such as forestry, mining and other heavy industrial vehicle applications.

Related Product:

Orion Rigid Outlet Valve (O-14612)



Fluid or Medium Type:	Grease
Hose Size & Length:	3/8" x 25m
Max Operating Pressure:	600bar / 8700psi
Outlet Connection:	1/4" BSPM
Mounting Type:	Fixed Base
Duty:	Heavy

1/4" Hydraulic Grease Hose Assemblies



LUBE Pro
Professional Lubrication Equipment

Perfect for jump hose connections and short transfer and distribution lines. These pre-made hose assemblies offer a flexible, robust and cost-effective solution for grease transfer.

- 2 Wire 1/4" hose
- Maximum working pressure - 400 bar / 5800 psi

Item No:	81002	81004	81004-MF	81008	81012
Length:	2m	4m	4m	8m	12m
End Connections:	FF	FF	MF	FF	FF



Enquire about our hose crimping capabilities. Custom hose lengths and fittings can be swaged to suit many applications.

Grease Control Valve - Flexible Outlet (13860L)



LUBE Pro
Professional Lubrication Equipment

A standard duty grease dispensing hand piece which is suitable for most standard greasing applications. Includes inline swivel on inlet.

Related Product:

Z-Swivel Inline Swivel (14001)



Fluid Type:	Grease
Pressure Range:	0-400bar / 0-5800psi
Inlet Connection:	1/4" BSPF
Outlet Type:	Flexible with 4 Jaw Coupler
Duty:	Standard

Grease Control Valve - Rigid Outlet (13880L)



LUBE Pro
Professional Lubrication Equipment

A standard duty grease dispensing hand piece which is suitable for most standard greasing applications. Includes inline swivel on inlet.

Related Product:

Z-Swivel Inline Swivel (14001)



Fluid Type:	Grease
Pressure Range:	0-400bar / 0-5800psi
Inlet Connection:	1/4" BSPF
Outlet Type:	Rigid with 4 Jaw Coupler
Duty:	Standard

Grease Control Valve - Rigid Outlet (O-14612)



ORION[™]
Alenlec & Orion AB SWEDEN

A heavy duty grease dispensing hand piece which is suitable for most demanding environments and high usage greasing applications.

Related Product:

Z-Swivel Inline Swivel (14001M)



Fluid Type:	Grease
Pressure Range:	0-500bar / 0-7250psi
Inlet Connection:	1/4" BSPF
Outlet Type:	Rigid with 4 Jaw Coupler
Duty:	Heavy

Digital Grease Flow Meter 1/8" (O-14710)



Suited for fitting to the outlet of a grease control valve or on auto greasing system distribution lines, this digital meter allows dispensed volumes to be accurately measured

Fluid or Medium Type:	Grease
Flow Range:	0-2000g/minute
Pressure Range:	0-500bar / 0-7250psi
Inlet Connection:	1/8" BSPF
Outlet Type:	1/8" BSPF
Meter Accuracy:	±3%
Duty:	Heavy

Digital Grease Meter Gun - Rigid Outlet (13890L)



This grease dispensing hand piece meters the volume of grease dispensed via an integrated digital meter

Fluid or Medium Type:	Grease
Pressure Range:	0-600bar / 0-8700psi
Inlet Connection:	1/4" BSPF
Outlet Type:	Rigid with 4 Jaw Coupler
Meter Accuracy:	±2%
Duty:	Standard

Standard Duty Lever Grease Gun - 400G (GG400E)



An economy 400g lever action grease gun, with a maximum delivery pressure of 5,000psi.

Designed as an economy grease gun for basic greasing jobs, this will perform well for the majority of low volume and non-industrial applications.

- Suits 400g cartridges and bulk fill
- Comes with air bleed valve & bulk fill nipple

Gun Size:	400g Cartridge
Max Output Pressure:	345bar / 5000psi
Outlet Connection:	1/8" BSPF
Dispensing Nozzle:	Rigid with 4 Jaw Coupler
Duty:	Standard

Heavy Duty Lever Grease Gun - 400G (GG400)



A heavy duty 400g lever action grease gun, with a maximum delivery pressure of 8,000psi. Suits industrial machinery greasing applications.

- Suits 400g cartridges and bulk fill
- Comes with air bleed valve & bulk fill nipple

Gun Size:	400g Cartridge
Max Output Pressure:	550bar / 8000psi
Outlet Connection:	1/8" BSPF
Dispensing Nozzle:	Rigid with 4 Jaw Coupler
Duty:	Heavy

Standard Duty Lever Grease Gun - 450G (GG450E)



An economy 450g lever action grease gun, with a maximum delivery pressure of 5,000psi. Designed as an economy grease gun for basic greasing jobs, this will perform well for most low volume and non-industrial applications.

- Suits 450g cartridges and bulk fill
- Comes with air bleed valve & bulk fill nipple

Gun Size:	450g Cartridge
Max Output Pressure:	345bar / 5000psi
Outlet Connection:	1/8" BSPF
Dispensing Nozzle:	Rigid with 4 Jaw Coupler
Duty:	Standard

Heavy Duty Lever Grease Gun - 450G (GG450M)



A heavy duty 450g lever action grease gun, with vario high pressure & high flow settings which is capable of a maximum delivery pressure of 10,000psi. This grease gun is a versatile, premium quality unit which is built for high usage applications and industrial environments.

- Vario high pressure / high volume selection
- Comes with air bleed valve

Gun Size:	450g Cartridge
Max Output Pressure:	690bar / 10000psi
Outlet Connection:	1/8" BSPF
Dispensing Nozzle:	Rigid with 3 Jaw Coupler
Duty:	Heavy

Pistol Grip Grease Gun - 400G (PGG400)



A 400g pistol action grease gun, with a maximum delivery pressure of up to 8,000psi.

This pistol grip grease gun is a high quality unit which is built for high usage applications and industrial environments.

- Suits 400g cartridges and bulk fill
- Comes with air bleed valve & bulk fill nipple

Gun Size:	400g Cartridge
Max Output Pressure:	550bar / 8000psi
Hose Size & Length:	1/8" x 300mm
Dispensing Nozzle:	Flexible with 4 Jaw Coupler
Duty:	Standard

Economy Pistol Grip Grease Gun - 450G (PGG450E)



Designed as an economy grease gun for basic greasing jobs, this will perform well for most low volume and non-industrial applications.

- Suits 400g cartridges and bulk fill
- Comes with air bleed valve & bulk fill nipple

Gun Size:	450g Cartridge
Max Output Pressure:	345bar / 5000psi
Hose Size & Length:	1/8" x 300mm
Dispensing Nozzle:	Flexible with 4 Jaw Coupler
Duty:	Standard

Pistol Grip Grease Gun - 450G (PGG450)



A 450g pistol action grease gun, with a maximum delivery pressure of up to 8,000psi.

This pistol grip grease gun is a high quality unit which is built for high usage applications and industrial environments.

- Suits 450g cartridges and bulk fill
- Comes with air bleed valve & bulk fill nipple

Gun Size:	450g Cartridge
Max Output Pressure:	550bar / 8000psi
Hose Size & Length:	1/8" x 300mm
Dispensing Nozzle:	Flexible with 4 Jaw Coupler
Duty:	Standard

Heavy Duty Pistol Grip Grease Gun - 450G (PGG450M)



This grease gun is a versatile, quality unit which is built for high usage applications.

It allows the user to select between a high volume or high pressure setting, allowing the user to choose the optimum setting for the job at hand.

- Vario high pressure / high volume selection
- Comes with air bleed valve & bulk fill nipple

Gun Size:	450g Cartridge
Max Output Pressure:	690bar / 10000psi
Hose Size & Length:	1/8" x 300mm
Dispensing Nozzle:	Flexible with 4 Jaw Coupler
Duty:	Heavy

Air Grease Guns , Single Shot



These are single shot, air-operated grease guns which means that the guns will deliver a shot of grease each time the trigger button is pressed, resulting in fast and effortless greasing.

- Single shot operation
- Suits 400g cartridges and bulk fill
- Comes with rigid outlet spout & 4 jaw coupler
- Light weight

Item No:	AGG400	AGG450
Gun Size:	400g Cartridge	450g Cartridge
Pump Type:	Pneumatic	Pneumatic
Pump Max Output Pressure:	320bar / 4640psi	320bar / 4640psi
Air Inlet Pressure:	5-8bar / 70-115psi	5-8bar / 70-115psi
Pump Max Free Flow	2.5g/shot	2.5g/shot
Duty	Standard	Standard

Air Grease Gun 400g, Continuous Flow (AGG400M)



This is a continuous flow air-operated grease gun which means that while there is limited back pressure, the trigger button can be held down and it will continuously deliver grease. As the pressure rises, the continuous flow will slow down, and from that point grease can be delivered at high pressure by pulsing the trigger button which will cause the gun to deliver a shot each time the trigger button is pulsed (like a single shot gun).

- Continuous flow operation at low pressure
- Suits 400g cartridges and bulk fill
- Comes with rigid outlet spout & 4 jaw coupler
- Light weight

Gun Size:	400g Cartridge
Pump Type:	Pneumatic
Pump Max Output Pressure:	320bar / 4640psi
Air Inlet Pressure:	5-8bar / 70-115psi
Pump Max Free Flow:	200g/min
Duty:	Standard

Heavy Duty Battery Grease Guns, 18V



LUBE Pro[®]
Professional Lubrication Equipment

This is a robust battery grease gun which strikes a good balance between power and physical weight. At 18V, this powerful gun can deliver up to 10,000psi and is light enough to handle easily. Comes with a robust carry case, spare battery, 1 hour fast charger, and carrying sling for the gun.

- Comes with 1m long flexible outlet hose & 4 jaw coupler
- Includes two long life 18V batteries (Nickel Metal Hydride)
- Comes with 230V charger - 1hr charge time
- Robust carry case



Item No:	BGG18V-400	BGG18V-450
Gun Size:	400g Cartridge	450g Cartridge
Gun Type:	Battery	Battery
Max Output Pressure:	690bar / 10000psi	690bar / 10000psi
Max Free Flow Rate:	85g/min	85g/min
Duty:	Heavy	Heavy
Components:	Grease Gun with 1m Hose, 2 x Batteries, 1 x Battery Charger	Grease Gun with 1m Hose, 2 x Batteries, 1 x Battery Charger

1/8" BSP Grease Couplers



4 Jaw Grease Coupler (14002)



- 1/8" BSP
- 5000psi
- Standard Duty

Needle Point Grease Coupler (14002-NP)



- 1/8" BSP
- 5000psi
- Standard Duty

4 Jaw Grease Coupler (O-14512)



- 1/8" BSP
- 7250psi
- Heavy Duty

3 Jaw Industrial Grease Coupler (14002HD)



- 1/8" BSP1
- 10000psi
- Heavy Duty

Suitable for use with hand operated equipment and pneumatic systems with maximum pump ratios of 50:1

Suitable for use with low and high pressure greasing equipment

M10x1 Grease Couplers



Suitable for use with hand operated equipment and pneumatic systems with maximum pump ratios of 50:1

4 Jaw Grease Coupler (14002-M10)



- M10x1 BSP
- 5000psi
- Standard Duty

Needle Grease Coupler (14002NP-M10)



- M10x1 BSP
- 5000psi
- Standard Duty

Quick Release Grease Coupler (14002-QR)



This is a very robust quick release grease coupler - partly due to the design utilising normal coupler jaws. This means that the jaws are much harder wearing than some other quick release grease couplers on the market.

This is a very compact unit with DIN standard outer diameter of 15mm, making it suitable for greasing in tight locations.

- 1/8" BSP
- 4 Jaw

Standard Duty Flexible Outlets



Flexible outlet hoses suitable for hand operated grease guns only, with various lengths and connection fittings.



FGH300

300mm Long

1/8" BSP End Connections



FGH450

450mm Long

1/8" BSP End Connections



FGH600

600mm Long

1/8" BSP End Connections



FGH300-M10

300mm Long

M10x1 End Connections



FGH450-M10

450mm Long

M10x1 End Connections

Heavy Duty Flexible Outlets



Suitable for use with low and high pressure greasing equipment



FGH450P

450mm Long

1/8" BSP End Connections



FGH1000P

1000mm Long

1/8" BSP End Connections

Rigid Outlets



Suitable for use with hand operated equipment and pneumatic systems with maximum pump ratios of 50:1



14005

1/8" BSP End Connections



14005-M10

M10x1 End Connections

Gun Loader Nipples & Couplers



Loader nipples for grease guns and couplers for bulk loader pumps to enable bulk filling of grease guns



18104
Grease Gun Loader Nipple
9mm



18102
Grease Gun Loader Nipple
12mm



18105
Grease Gun Loader Coupling
9mm



18103
Grease Gun Loader Coupling
12mm



18100
Grease Gun Loader
Coupling 9 & 12mm

Grease Gun Holders



Wall mount holders for tidy storage of 400 and 450 gram grease guns.

Item No:	GGH400	GGH450
Suits Grease Gun Size:	400g	450g

Swivels



O-18070
Inline Straight Grease Swivel
1/4" BSP M/F



14001
Grease Z-Swivel
1/4" BSP M/F



14001
Grease Z-Swivel
1/4" BSP M/F

Compact, inline swivels to allow the grease hand piece to rotate freely. The swivels attach between the hose and the handpiece inlet.

Electromechanical Single Point Lubricator (AL-E150FC)



A smart single point grease lubricator which is refillable. A worthy investment with fast payback by reducing maintenance costs. This electronic single point grease lubricator is the ultimate option for delivering the correct volume of grease and are a valuable investment for any plant machinery which needs regular greasing. A guaranteed approach to save money while providing the optimum greasing performance

- Equipped with electromechanical gear sets
- Red LED warning lights to notify abnormal back pressure
- Adjustable dispense settings

Material Outlet:	1/2" BSPM
Dispensing Grease Volume:	150cc
Dispense Period Setting:	1 - 12 Months Adjustable
Operating Temperature Range:	-20 to 60°C (-4 to 140°F)
Output Pressure:	75 - 150 psi (5 - 10 bar)
Grease Cartridge Replacements:	Dependent on application
Protection Rating:	IP65

Mechanical Single Point Lubricator (AL-M150)



A mechanically driven single point grease lubricator. This robust unit takes the hard work out of machine greasing maintenance & helps prevent costly repairs, reduce maintenance labour costs and thus increasing the operational life of the machinery.

- Spring mechanical operation
- Simple mechanical flow adjustment
- Refillable via grease nipple connection
- Suits NLGI 1&2 grease types

Material Outlet:	1/4" BSPM
Dispensing Grease Volume:	150cc
Dispense Period Setting:	Mechanical Adjustable
Operation:	Spring
Output Pressure:	Max 20 bar
Grease Replacement Type:	Refillable via grease nipple

Electrochemical Single Point Lubricator (AL-EL125)



Single point lubrication automatically delivers the correct amount of lubricant to a point over a set period, thus drastically improving the longevity of the bearing. This results in an overall increase in productivity via the decrease in machine downtime, thus enabling a favourable cost-savings benefit.

The continuous lubrication of bearings removes and protects foreign matter from entering, slows oxidation, aids in dissipating heat, and ensures a constant supply of fresh lubricant.

- Filled with customer specified lubricant (customer can supply).
- Approved for all industries and environments. Certified Intrinsically Safe for Class 1.
- Dust-Proof, waterproof up to 30' and weatherproof.



Available sizes

Grease Capacity	125cc (60, 250 and 475cc also available)
Gas Type:	Inert Nitrogen
Operating Method:	Electrochemical
Operating Span:	15 Days to 1 Year to Empty
Operating Pressure:	Up to 50psi (3.5 Bar)
Operating Temperature:	-40°F to +132°F (-40°C to +55°C)
Reusability:	Disposable
Remote Installation:	Up to 1m

Grease Compression Fittings

High pressure grease fittings for 6mm and 8mm grease tubing ensures a robust and effective method for remote greasing applications, either via manual lubrication or remote mounting with single point lubricators.

Traditionally more reliable than threaded fittings, these fittings are not dependant on a thread compound to achieve an effective seal, as it relies on the compression of crimped ferrule between the piping and the nut of the fitting.

These fittings are the world standard used on centralised lubrication systems such as Groeneveld, Lincoln, SKF/Vogel, Bekamax, Hebonilube and Raasm.



AL-GE6LLR1/8
Straight Fitting
1/8" BSP

AL-GE6LLM6X1
Straight Fitting
M6X1

AL-GE6LLM8X1
Straight Fitting
M8X1



AL-WE6LLR1/6
Elbow Fitting
1/8" BSP

AL-WE6LLM6X1
Elbow Fitting
M6X1

AL-WE6LLM8X1
Elbow Fitting
M8X1

Reusable Hose Fittings

These reusable hose fittings are specifically designed to suit Polyamide 8mm grease tubing (AL-HD8). The screw sleeve is first turned onto the hose, then followed by a stand pipe screwed into the sleeve. This allows the stand pipe to be inserted into compression fittings on bearings and other lubrication points to allow for a high pressure greasing.



AL-TSS-6
Threaded (Screw) Sleeve



AL-HSSPS-6
Straight Hose Stud



AL-HSSP90-6
Elbow Hose Stud

Grease Tubing & Hose

Universal tubing and hose to suit any lubrication system or manual lubrication application. Ideal for remote mounting applications for single point lubricators and multiple

Custom size hose assemblies can be made on request.

Request how we can assist with existing centralised lubrication systems.



AL-HD6
6X1.5mm Plastic Tubing
240 bar / 3480 psi



AL-HD8
8.4mm Polyamide Hose
840 bar / 12183 psi



FUEL & ADBLUE EQUIPMENT



Fuel Dispensing Kits	101
Fuel Pumps	103
Fuel Reels, Filters, Meters, & Nozzles	105
Fuel Accessories	108
Adblue Dispensing Kits	109
Adblue Pumps	111
Adblue Nozzles	114
Adblue Meters & Accessories	115

Manual Fuel Dispensing Kits



Showing part number AR9920-HSMM

The best suited hand-operated pumps for fast transfer of fuels and oils up to SAE30 and for engine protection, complete with high flow mechanical meter.

- High flow aluminium rotary hand pump
- 2m Delivery hose & dispensing spout
- Built in nozzle holder
- Suitable for fuels and oils up to SAE30

Item No:	AR9920-HSFM	AR9920-HSMM
Suits Drum/Container Size:	60L - 210L	60L - 210L
Pump Type:	Manual Rotary	Manual Rotary
Pump Outlet:	Steel Spout	Steel Spout
Pump Max Free Flow Rate:	100L/min	100L/min
Duty:	Standard	Standard
Hose Size & Length:	1" x 2m	1" x 2m
Components:	Rotary Hand Pump, Diesel Water Trap Filter, 2m Hose, Spout, Mechanical Meter	Rotary Hand Pump, 2m Hose, Spout, Mechanical Meter

Electric Diesel Dispensing Kits - 12V



Showing part number DPE1240TK



Showing part number DPE1240TK-A

These compact 12V diesel dispensing kits make diesel dispensing in the field safer for the environment and the user.

- Electric self priming vane pump with bypass protection
- 4m Delivery hose
- Carry handle on pump
- 30 Minute duty cycle
- 2m Electric cable with battery terminal clips

Item No:	DPE1240TK	DPE1240TK-A
Suits Drum/Container Size:	Variable	Variable
Pump Type:	Electric - 12VDC	Electric - 12VDC
Pump Max Output Pressure:	1bar / 14.5psi	1bar / 14.5psi
Pump Max Free Flow Rate:	40L/min	40L/min
Duty:	Standard	Standard
Hose Size & Length:	3/4" x 4m	3/4" x 4m
Components:	12VDC Pump, 4m Hose, Manual Dispensing Nozzle, Fittings	12VDC Pump, 4m Hose, Auto Shutoff Nozzle, Fittings

Electric Diesel Dispensing Kits - 12/24V



Showing part number DPE2470TK



Showing part number DPE2470TK-A

These 12V & 24V electric diesel transfer kits are ideal for machinery refuelling where mains power is not readily available. Ultra versatile diesel transfer pump kits to cover the vast majority of field diesel dispensing operations.

- Electric self priming vane pump with bypass protection
- 30 Minute duty cycle
- 2m Electric cable with battery terminal clips

Item No:	DPE2470TK	DPE2470TK-A
Suits Drum/Container Size:	Variable	Variable
Pump Type:	Electric - 12 / 24VDC	Electric - 12 / 24VDC
Pump Max Output Pressure:	2bar / 29psi	2bar / 29psi
Pump Max Free Flow Rate:	35 / 70L/min	35 / 70L/min
Duty:	Standard	Standard
Hose Size & Length:	3/4" x 4m	3/4" x 4m
Components:	12/24VDC Pump, 4m Hose, Manual Dispensing Nozzle, Fittings	12/24VDC Pump, 4m Hose, Auto-Shutoff Nozzle, Fittings

Electric Mini Diesel Bowser, 230V (DBE23056M)



An affordable and efficient all-in-one option for dispensing diesel. Perfect for dispensing from a tank.

- Electric self priming vane pump with bypass protection
- Mechanical meter with total and reset counters, accuracy $\pm 1\%$
- 4m Delivery hose
- 2m Suction hose
- Steel bowser housing

Suits Drum/Container Size	Variable
Pump Type:	Electric - 230VAC
Pump Max Output Pressure:	2bar / 29psi
Pump Max Free Flow Rate:	57L/min
Hose Size & Length:	1" x 4m
Dispensing Nozzle:	Auto-Shutoff Fuel Nozzle
Duty:	Standard
Components:	230VAC Pump, Mechanical Meter, Steel Housing, 4m Hose, Auto-Shutoff Nozzle

Electric Diesel Transfer Pump, 12V, 40L/min (DPE1240)



A portable 12V diesel transfer pump that can be used in many different applications.

- Self priming rotary vane pump with internal bypass valve
- 30 Minute duty cycle
- 2m Electric cable with terminal clips

Suits Drum/Container Size	Variable
Pump Type:	Electric - 12VDC
Pump Outlet:	3/4" BSPF
Pump Max Output Pressure:	1bar / 14.5psi
Pump Max Free Flow Rate:	40L/min
Duty:	Standard

Electric Diesel Transfer Pump, 12-24V, 35-70L/min (DPE2470)



This portable pump can be used in many different applications. Dual voltage capability makes this pump extremely versatile.

- Self priming rotary vane pump with internal bypass valve
- 30 Minute duty cycle
- 2m Electric cable with terminal clips

Suits Drum/Container Size	Variable
Pump Type:	Electric - 12 / 24VDC
Pump Outlet:	1" BSPF
Pump Max Output Pressure:	2bar / 29psi
Pump Max Free Flow Rate:	35 / 70L/min
Duty:	Standard

Electric Diesel Transfer Pump, 230V, 56L/min (DPE23056)



A mains powered electric diesel pump that is suitable for both transfer and fuel dispensing applications.

- Self priming rotary vane pump with internal bypass valve
- Incorporates an easy clean filter
- 1" BSPF inlet & outlet
- Continuous duty cycle

Suits Drum/Container Size	Variable
Pump Type:	Electric - 230VAC
Pump Outlet:	1" BSPF
Pump Max Output Pressure:	2bar / 29psi
Pump Max Free Flow Rate:	57L/min
Duty:	Standard

High Flow Rotary Fuel Pump (AR9920-HS)



This is a highly effective hand operated pump for applications requiring fast transfer of fuels and oils up to SAE30.

- 2m Delivery hose & spout
- Standard 2" BSPM drum adaptor & 3 piece suction tube
- Built in nozzle holder

Suits Drum/Container Size	60L - 210L
Pump Type:	Manual Rotary
Pump Max Free Flow Rate:	100L/min
Pump Outlet:	Hose & Nozzle
Duty:	Standard

Heavy Duty Fuel Transfer Hose Reel, 1" x 30m (63030L)



A hard to find product, this 30m x 1" diesel transfer reel is the perfect fit for applications where extra reach is required. An excellent option for applications such as off-road refueling vehicles where it is not always possible to get right beside the machine needing to be refueled. A versatile hose reel which can also be used for high volume, low pressure transfer of oils and other compatible fluids.

- Strong Steel Construction
- Hose guide rollers on all 4 sides gives smooth operation
- 30m x 1" hose
- Includes 1.2m lead-in hose
- Auto spring retract

Fluid or Medium Type:	Oil / Diesel / Kerosene
Hose Size & Length:	1" x 30m
Outlet Connection:	1" BSPM
Max Operating Pressure:	10bar / 145psi
Mounting Type:	Fixed Base

Diesel Dispense Nozzle, 1", Manual (DDNM1)



A manual diesel delivery nozzle suited for both pumped and gravity dispensing, which also features an integrated inlet swivel.

- 0-100L/min flow range
- 0-4bar / 0-60psi pressure range
- 1" BSPF inlet swivel connection
- Suits Diesel and Kerosene
- Suited for use with gravity or pumped systems

Diesel Dispense Nozzle, 3/4", Automatic Shutoff (DDNA20)



This economy automatic shutoff diesel nozzle is suited for pumped diesel dispensing in small to medium volume refueling applications.

- 8-50L/min flow range
- 0.5-3.5bar / 7-50psi pressure range
- 3/4" BSPF connection
- Suits Diesel and Kerosene
- Automatic trigger trip out mechanism
- Suited for use with pumped systems only

Metered Diesel Dispense Nozzle, 3/4", Automatic Shutoff (DDNA20-ME)



This automatic shut-off diesel nozzle is suited for pumped applications, and includes an integrated digital flow meter for measuring the dispensed volume.

- 8-60L/min flow range
- 0.5-3.5bar / 7-50psi pressure range
- 3/4" BSPF connection
- ±0.5% Meter accuracy
- Suits Diesel and Kerosene
- Automatic trigger trip out mechanism
- Suited for use with pumped systems only

Diesel Dispense Nozzle 1", Automatic Shutoff (DDNA1)



This automatic shut-off diesel nozzle is suited for pumped applications, and includes a swivel on the inlet for easier operation.

- 8-50L/min flow range
- 0.5-3.5bar / 7-50psi pressure range
- 1" BSPF inlet swivel connection
- Suits Diesel and Kerosene
- Automatic trigger trip out mechanism
- Suited for use with pumped systems only

High Flow Diesel Dispense Nozzle, 1", Automatic Shutoff (DDNA1-HF)



This high flow automatic shut-off diesel nozzle is suited for pumped applications, and is capable of delivering up to 100L per minute.

- 8-100L/min flow range
- 0.5-3.5bar / 7-50psi pressure range
- 1" BSPF inlet connection
- Diesel and Kerosene
- Suited for use with pumped systems only
- 3 Speed dispensing trigger latch

Diesel Tank Filter with Transparent Bowl (FF100)



A simple yet effective filter for use on diesel tanks, this diesel filter unit traps water in the bowl, and particles in the filter.

- Improved design; filter head does not obstruct ports like most other similar units
- 1" BSP inlet & outlet ports
- Easily removable 10 micron filter element included
- Transparent bowl allows easy checking for water build up
- Replacement filter elements available

Diesel Tank Filter Element (FF100E)



Replacement 10 micron filter element for FF100 diesel filtration unit.

Mechanical Diesel Flow Meter, 1" (DFMM120)



This diesel flow meter is commonly used on pumped fuel transfer applications, and elevated tanks for gravity fed dispensing.

- 20-120L/min flow range
- 0-3.5bar / 0-50psi pressure range
- 1" BSPF inlet & outlet connection
- ±1% Meter accuracy
- Two totalizers - 1 x 8 digit fixed, 1 x 4 digit resettable

Digital Fuel Flow Meter, 1" (U-ME100)



A very versatile electronic flow meter suitable for both diesel and adblue dispensing, which is suitable for applications with flows up to 100L per minute.

- 10-100L/min flow range
- 0-5bar / 0-72psi pressure range
- 1" BSPF inlet & outlet connection
- ±0.5% meter accuracy
- Suits AdBlue/DEF & Diesel
- 5 digit resettable total

Quick Coupling Unit for Drum or IBC (DC-2/1)



LUBE Pro
Professional Lubrication Equipment

Quick coupling unit designed to screw into 2" drum or tank thread, with 1" female thread underneath for suction tube, and 1" male thread on top to attach to pump.

Fuel Nozzle Inline Swivel - 3/4" M/F (FSS20-MF)



LUBE Pro
Professional Lubrication Equipment

Inline swivel for inlet to fuel dispensing nozzle, with 3/4" BSP connection.

Fuel Nozzle Inline Swivel - 1" M/F (FSS25-MF)



LUBE Pro
Professional Lubrication Equipment

Inline swivel for inlet to fuel dispensing nozzle, with 1" BSP connection.

Fuel Delivery Nozzle Multi-Plane Swivel - 1" MF (FZS25-MF)



LUBE Pro
Professional Lubrication Equipment

Multi-plane fuel swivels offer a low friction swivel point which cater for both dispensing gun swiveling, and also for avoidance of hose twisting due to vertical or lateral movement of the gun. This model has 1" female inlet and 1" male outlet connections.

Gravity IBC AdBlue Dispensing Kit, Manual Nozzle (U-GDK20)



This AdBlue IBC gravity dispensing kit is designed for applications where a 1000L IBC is elevated.

This kit includes IBC connection fittings, 4m dispensing hose, and a manual dispensing gun.

Suits Drum/Container Size	IBC (1000L)
Hose Size & Length:	3/4" x 4m
Dispensing Nozzle:	Manual Adblue Nozzle
Duty:	Standard
Components:	4m Hose, Manual Dispensing Nozzle, IBC Connection Kit

Pneumatic Adblue Pump Kits



U-22049-2A

U-22049-2M



These pneumatic AdBlue dispensing kits include a 1:1 pneumatic AdBlue pump, 2m hose and an automatic shut off dispensing gun.

This suits many different drum and tank sizes due its extendable suction tube, and thread adaptors are also available from us on request.

Item No:	U-22049-2A	U-22049-2M	U-22049-2MM
Suits Drum/Container Size	60L - 210L	60L - 210L	60L - 210L
Air Inlet Pressure:	5-8bar / 70-115psi	5-8bar / 70-115psi	5-8bar / 70-115psi
Pump Max Output Pressure:	8bar / 115psi	8bar / 115psi	8bar / 115psi
Pump Max Free Flow Rate:	20L/min	20L/min	20L/min
Duty:	Standard	Standard	Standard
Hose Size & Length:	3/4" x 2m	3/4" x 2m	3/4" x 2m
Components:	1:1 Pump, 2m Hose, Auto Shutoff Nozzle	1:1 Pump, 2m Hose, Manual Dispensing Nozzle	1:1 Pump, 2m Hose, Manual Dispensing Nozzle, Digital Meter

Electric AdBlue Pump Kits, 12V



These self priming 12V Electric AdBlue transfer kits are ideal for dispensing where mains power is not readily available. These kits include IBC connection fittings.

Item No:	U-IBC12DK-A	U-IBC12DK-M	U-IBC12DKM-A	U-IBC12DKM-M
Suits Drum/Container Size	IBC (1000L)	IBC (1000L)	IBC (1000L)	IBC (1000L)
Pump Type:	Electric - 12VDC	Electric - 12VDC	Electric - 12VDC	Electric - 12VDC
Dispensing Nozzle:	Auto-Shutoff Adblue	Manual Adblue	Auto-Shutoff Adblue	Manual Adblue
Pump Max Output Pressure:	1bar / 14.5psi	1bar / 14.5psi	1bar / 14.5psi	1bar / 14.5psi
Pump Max Free Flow Rate:	25L/min	25L/min	25L/min	25L/min
Hose Size & Length:	3/4" x 6m	3/4" x 6m	3/4" x 6m	3/4" x 6m
Components:	12VDC Pump, Mount Bracket, 6m Hose, Auto Shutoff Nozzle, IBC Connection Kit	12VDC Pump, Mount Bracket, 6m Hose, Manual Shutoff Nozzle, IBC Connection Kit	12VDC Pump, Mount Bracket, 6m Hose, Auto Shutoff Nozzle, Digital Meter , IBC Connection Kit	12VDC Pump, Mount Bracket, 6m Hose, Manual Shutoff Nozzle, Digital Meter , IBC Connection Kit

Electric AdBlue Pump Kits, 230V



These self priming 230V Electric AdBlue Transfer Kits are a convenient and fast way to dispense adblue. These kits include a 2m electric cable with a single phase plug and IBC connection fittings.

Item No:	U-IBC230DK-A	U-IBC230DK-M	U-IBC230DKM-A	U-IBC230DKM-M
Suits Drum/Container Size	IBC (1000L)	IBC (1000L)	IBC (1000L)	IBC (1000L)
Pump Type:	Electric - 230 VAC	Electric - 230 VAC	Electric - 230 VAC	Electric - 230 VAC
Dispensing Nozzle:	Auto-Shutoff Adblue	Manual Adblue	Auto-Shutoff Adblue	Manual Adblue
Pump Max Output Pressure:	1bar / 14.5psi	1bar / 14.5psi	1bar / 14.5psi	1bar / 14.5psi
Pump Max Free Flow Rate:	25L/min	25L/min	25L/min	25L/min
Hose Size & Length:	3/4" x 6m	3/4" x 6m	3/4" x 6m	3/4" x 6m
Components:	230VAC Pump, Mount Bracket, 6m Hose, Auto Shutoff Nozzle, IBC Connection Kit	230VAC Pump, Mount Bracket, 6m Hose, Auto Shutoff Nozzle, IBC Connection Kit	230VAC Pump, Mount Bracket, 6m Hose, Auto Shutoff Nozzle, Digital Meter , IBC Connection Kit	230VAC Pump, Mount Bracket, 6m Hose, Auto Shutoff Nozzle, Digital Meter , IBC Connection Kit

Lever Operated Adblue Pump - For Drums & IBC's (U-21029)



This quality lever action hand pump is very popular for simple Adblue dispensing operations.

Made from polypropylene with EPDM seals, this pump has a smooth and efficient action. The suction tube is extendable meaning that it suits many different drum and container types, making this a versatile, simple, and easy to use pump.

- Suits multiple drum/container types
- Standard 2" BSPM drum thread adaptor & extendable suction tube

Suits Drum/Container Size	60L - 210L
Pump Type:	Manual Lever
Pump Max Free Flow Rate:	300ml/stroke
Pump Outlet:	3/4" Hose Tail

Lever Operated Adblue Pump, Inc. Plastic Drum Thread Adaptor (U-21029-A12)



Pump as per above product, with included course thread adaptor to suit most Adblue drums.

- Comes with extendable suction tube

Suits Drum/Container Size	60L - 210L
Pump Type:	Manual Lever
Pump Max Free Flow Rate:	330ml/stroke
Pump Outlet:	3/4" Hose Tail

Pneumatic 1:1 Adblue Transfer Pump - For Drums & IBC's (U-22049)



Air-operated pump specifically designed for dispensing adblue, with variable length suction tube to suit different drums and tanks.

- Suits multiple drum/container types
- Standard 2" BSPM drum thread adaptor & extendable suction tube

Suits Drum/Container Size	60L - 210L
Air Inlet Pressure:	5-8bar / 70-115psi
Pump Outlet:	3/4" Hose Tail
Pump Max Output Pressure:	8bar / 115psi
Pump Max Free Flow Rate:	20L/min

Double Diaphragm Chemical Pump, 1/2", Polypropylene & Viton (PDDP15-45V)



This air operated double diaphragm chemical pump has wetted parts consisting of polypropylene, Viton, Teflon, and stainless steel making it suitable for a large range of chemicals and other fluids. With a maximum flow of 50L/minute, this is a highly versatile pneumatic pump for many industrial applications.

- Polypropylene body, Viton seals & diaphragms
- 1/2" BSPF inlet & outlet ports

Suits Drum/Container Size	Variable
Air Inlet Pressure:	3-8bar / 45-115psi
Pump Outlet:	1/2" BSPF
Pump Max Output Pressure:	8bar / 115psi
Pump Max Free Flow Rate:	50L/min

Electric Adblue Transfer Pump, 12V, 25L/min (U-55521)



This self priming 12V adblue membrane pump is a versatile option for off-grid adblue transfer and dispensing applications.

It can also be used where there is only a 24VDC power source by connecting the terminal clips across one battery only.

- Self priming electric diaphragm pump
- 2m Electric cable with terminal clips

Suits Drum/Container Size	Variable
Pump Type:	Electric - 12VDC
Pump Max Outlet:	3/4" Hose Tail
Pump Max Output Pressure:	1bar / 14.5psi
Pump Max Free Flow Rate:	25L/min

Electric Adblue Transfer Pump, 230V, 25L/min (U-55505)



Suited for adblue transfer and dispensing applications, this 230V single phase electric diaphragm pump is self priming, and is an essential component in many adblue dispensing and transfer systems.

- Self priming electric membrane pump
- 3/4" hose tail on inlet & outlet
- NZ/AUS Single phase plug on cord

Suits Drum/Container Size	Variable
Pump Type:	Electric - 230VAC
Pump Outlet:	3/4" Hose Tail
Pump Max Output Pressure:	1bar / 14.5psi
Pump Max Free Flow Rate:	25L/min

Adblue Dispense Nozzle, 3/4", Manual (U-23580)



A polypropylene & stainless steel manual adblue (DEF) delivery nozzle suited for both pumped and gravity dispensing operations.

- 0-60L/min flow range
- 0-3bar / 0-45psi pressure range
- 3/4" hose tail inlet connection
- Suited for use with pumped and gravity systems

Adblue Dispense Nozzle, 3/4", Auto Shutoff (U-23577L)



This automatic shut-off adblue (DEF) nozzle is suited for pumped applications, and is manufactured from stainless steel and polypropylene

- 8-50L/min flow range
- 0-3bar / 0-45psi pressure range
- 3/4" hose tail inlet connection
- Automatic trigger trip out mechanism
- Suited for use with pumped systems only

Adblue Drum Airtight Connection Unit (U-DCU01)



This air lock coupler prevents air from getting into the pump after disconnection from the drum or IBC, & therefore prevents adblue crystal damage to the pump.

Adblue crystallizes with exposure to air, so the purpose of this coupler is to prevent air from getting into the lines when the drum or IBC is changed.

Digital Diesel & Adblue Flow Meter, 1" (U-ME100)



A very versatile electronic flow meter suitable for both diesel and adblue dispensing, which is suitable for applications with flows up to 100L per minute.

- 10-100L/min flow range
- 0-5bar / 0-72psi pressure range
- 1" BSPF inlet & outlet connection
- $\pm 0.5\%$ meter accuracy
- Suits AdBlue/DEF & Diesel
- 5 digit resettable total

IBC Protective PVC Cover for Adblue (U-IBCCOV)



Protective cover for IBC's to help protect the adblue from sunlight exposure, and the resulting substantial reduction in adblue quality and shelf life.

- Has a cutout for the valve in the base on the front of IBC
- Includes a 25mm slot up front face for level sighting
- Dimensions (LxWxH): 1225mm x 1020mm x 1000mm

TANKS & BUNDING



Clean Oil Tanks	116
Steel Waste Oil Tanks	117
Plastic Waste Oil Tanks	118
Tanks Accessories	119
Spill Pallets & Foam Bunding	120

Steel Self Bunded Oil Tanks



Manufactured as 2 tanks in 1, the inner tanks are made from blow moulded high-density polyethylene (HDPE), while the outer tanks are made from steel sheet which is galvanised on both sides with a high quality polymer seal.

The steel sheets are roll-joined and then pressed using sealant, which creates a leak proof seam, and the HDPE tanks are then enclosed in the steel outer tanks.

- Has 4 entry ports on top of tank
- Includes level gauge
- Includes leak detection sensor between inner and outer skin
- Lightweight when empty allowing for easy manoeuvring
- 5 Year manufacturers warranty
- Not suitable for outdoor use
- Custom modified to better suit New Zealand conditions



Item No:	TST400	TST620	TST750	TST1000D	TST1500
Tank Capacity:	400L	620L	750L	1000L	1500L
Containment Type:	Primary & Secondary	Primary & Secondary	Primary & Secondary	Primary & Secondary	Primary & Secondary
Tank Entry Ports:	2" BSPF x 4	2" BSPF x 4	2" BSPF x 4	2" BSPF x 4	2" BSPF x 4
Dimensions (LxWxH):	750x690x1175	750x690x1615	1000x760x1370	1100x705x1610	1650x755x1870
Item Weight:	46Kg	60Kg	67Kg	76Kg	133Kg

Steel Self Bunded Waste Oil Tanks



Premium quality double bunded tanks which meets or exceeds New Zealand standards for waste oil storage, and is suitable for outdoor applications.

In addition to compliance with increasing regulations, these tanks also offer unparalleled functionality for installation, use and is easy to move due to its forklift friendly base.

- 4 x 2" BSP ports inside weatherproof, contained connection box
- 2 x 1" BSP interstitial ports with leak detection sensor installed in 1 port
- Includes level gauge and breather
- Large manway for accessing tank
- Minimum 110% bund capacity
- Premium 2 pack painted finish - custom colours available
- Additional sizes to our standard range are available - please enquire



Item No:	TSW20	TSW25	TSW30	TSW40	TSW50
Tank Capacity:	2000L	2500L	3000L	4000L	4990L
Containment Type:	Primary & Secondary	Primary & Secondary	Primary & Secondary	Primary & Secondary	Primary & Secondary
Tank Entry Ports:	2" BSPF x 4	2" BSPF x 4	2" BSPF x 4	2" BSPF x 4	2" BSPF x 4
Weight:	575Kg	665Kg	760Kg	965Kg	1050Kg
Dimensions (LxWxH):	1620x1255x1350	1900x1255x1350	2350x1255x1350	2106x1605x1700	2320x1605x1820

Plastic Bunded Waste Oil Tanks



At 1,000L this tank is the largest plastic waste oil tank allowed under New Zealand's general waste oil storage legislation.

Featuring a large access lid, and all labeling required to satisfy NZ regulations, this economy tank and bund is used for waste oil storage in many small to medium sized workshop applications.

- Large access lid
- Drain tray insert inside access lid for preventing large objects from getting into tank
- Minimum 110% bund capacity
- Only 1 tank is permitted per site

Item No:	PTB0500ASSY	PTB1000RPASSY
Rainproof:	No	Yes
Tank Capacity:	500L	1000L
Containment Type:	Primary & Secondary	Primary & Secondary
Tank Entry Ports:	2" BSPF x 2	2" BSPF x 2
Dimensions (LxWxH):	810mm x 1245mm	1250mm x 1385mm

Plastic Bunded Waste Oil Storage Assembly



Featuring a large access lid, level indicator float, suction tube & camlock connection for emptying, and all labeling required to satisfy NZ regulations, this economy tank and bund assembly is used for waste oil storage in many small to medium sized workshop applications.

- Large access lid
- Drain tray insert inside access lid for preventing large objects from getting into tank
- Minimum 110% bund capacity
- Suction assembly with camlock
- Level indicator float
- Only 1 tank is permitted per site

Item No:	PTB0500ASSY/ST/FLT	PTB1000RPASSY/ST/FLT
Rainproof:	No	Yes
Tank Capacity:	500L	1000L
Containment Type:	Primary & Secondary	Primary & Secondary
Tank Entry Ports:	2" BSPF x 1 Spare	2" BSPF x 1 Spare
Dimensions (LxWxH):	810mm x 1245mm	1250mm x 1385mm

Level Gauge for 400L Tank (TST-LG400)



Replacement level gauge to suit 400L double skinned tank (TST400).



Level Gauge for 620/1000L Tank (TST-LG620)



Replacement level gauge to suit both the 620L and 1000L double skinned tanks (TST620 & TST1000D).



Level Gauge for 750L Tank (TST-LG750)



Replacement level gauge to suit 750L double skinned tank (TST750).



Level Gauge for 1500L Super Tank (TST-LG1500)



Replacement level gauge to suit 1500L double skinned tank (TST1500).



Tank Breather, 2" BSP (TST-BTH2)



A simple yet effective tank breather, to assist easy breathing of tanks which is essential for applications where fast filling or fast dispensing takes place



Workstation Spill Containment Bund, 2 Drum (C-2DWFB-L)



This containment bund is molded from high-density polyethylene (HDPE), and primarily offers spill containment protection for workstation areas where spills are likely to occur. Ideal for containment protection for storage containers up to 65L.



- Made entirely from HDPE ensuring compatibility with a wide range of fluid and chemicals
- Removable grate
- Nestable design allowing multiple units to be stacked together when not in use
- Hook design on two edges means multiple units can be joined together to create large bunded area.

Item Type:	Work Station Bund
Sump Capacity:	80L
Containment Type:	Secondary
Load Rating:	1136Kg
Dimensions (LxWxH):	1320x660x150mm
Item Weight:	14Kg

Spill Containment Pallet, 2 Drum (C-2DSFCP-L)



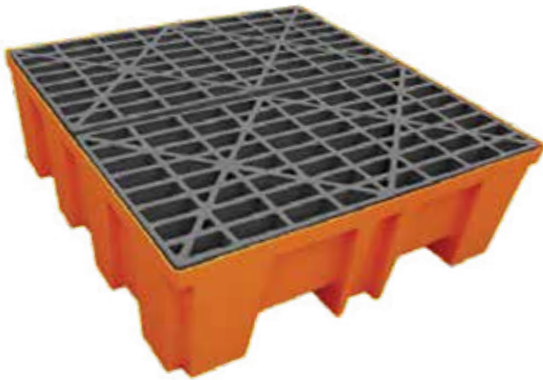
This spill pallet is moulded from high-density polyethylene (HDPE), and offers secondary spill containment for drums of oil, chemicals, and other compatible fluids. To comply with spill containment regulations, the maximum permitted single drum or container capacity for this pallet is 220L.



- Made entirely from HDPE ensuring compatibility with a wide range of fluid and chemicals
- Removable grate
- Nestable design allowing multiple units to be stacked together when not in use

Item Type:	Containment Pallet
Sump Capacity:	260L
Containment Type:	Secondary
Load Rating:	1136Kg
Dimensions (LxWxH):	1320x660x430mm
Item Weight:	21Kg

Spill Containment Pallet, 4 Drum (C-4DSFCP-L)



This spill pallet is moulded from high-density polyethylene (HDPE), and offers secondary spill containment for drums of oil, chemicals, and other compatible fluids. To comply with spill containment regulations, the maximum permitted single drum or container capacity for this pallet is 450L.

- Made entirely from HDPE ensuring compatibility with a wide range of fluid and chemicals
- Removable grate
- Nestable design allowing multiple units to be stacked together when not in use

Item Type:	Containment Pallet
Sump Capacity:	510L
Containment Type:	Secondary
Load Rating:	2273Kg
Dimensions (LxWxH):	1320x1320x430mm
Item Weight:	40Kg

IBC Spill Containment Pallet, 1000L (C-IBCOCP)



This spill pallet is manufactured from powder coated steel and offers secondary containment protection for bulk containers of oil, up to a maximum size of 1,050L.

- Robust steel construction
- Removable grate
- Nestable design allowing multiple units to be stacked together when not in use

Item Type:	Containment Pallet
Sump Capacity:	1170L
Containment Type:	Secondary
Load Rating:	1200Kg
Dimensions (LxWxH):	1350x1350x790mm
Item Weight:	150Kg



DRUM HANDLING & SPILL RESPONSE



Drum Trolleys & Lifters	123
Spill Response Equipment	126
Heaters & Covers	127

2 Wheel Drum Trolley, 20Kg (2WDT20)



This 2 wheel trolley is ideal for 16-30Kg grease and oil pails, and includes retaining clamp & hooks making it suitable for use with dispensing kits.

- Suits 16 - 30Kg pails
- Adjustable pail clamp height to suit varying pail sizes
- Gun & hose holding prongs
- Standard duty

2 Wheel Drum Trolley, 60kg (2WDT60)



This 2 wheel drum trolley suits 50 - 60Kg drums, and includes retaining chain to hold the drum and hooks to accommodate dispensing hose & gun.

- Suits 50 - 60Kg drums
- Includes adjustable retaining chain to hold drum to trolley
- Includes gun & hose holding prongs
- Standard duty

2 Wheel Drum Trolley, 220kg (2WDT220)



This heavy duty 2 wheel drum trolley suits 180 - 220Kg drums, and includes a retaining chain to hold the drum in place while being moved.

- Suits 180 - 220Kg drums
- Includes adjustable retaining chain to hold drum to trolley
- Has large pneumatic wheels for easy movement over uneven ground
- Heavy duty

3 Wheel Heavy Duty Drum Trolley, 220kg (3WDT220)



This highly manoeverable 3 wheel drum trolley suits 180-220Kg drums, and has pneumatic front tyres ensuring ease of use on uneven surfaces.

- Suits 180 - 220Kg drums
- Highly manoeverable and compact
- Pneumatic front wheels with braked swivel wheel
- Position for hose reel to be fitted if required
- Heavy duty

4 Wheel Drum Trolley, 60 Kg (70050)



This 4 wheel drum trolley suits 50 - 60Kg drums, and includes features making it suitable for use with dispensing kits.

- Suits 50 - 60Kg drums
- 2 fixed and 2 swivel wheels
- Includes gun & hose holding prongs
- Base dimensions 410mm x 410mm
- Standard duty

4 Wheel Drum Trolley, 220Kg (70200)



A popular model suited for 180 - 220Kg drums, which includes brackets and hooks for use with oil and grease dispensing kits.

- Suits 180 - 220Kg drums
- 2 fixed and 2 swivel wheels
- Includes gun & hose holding prongs
- Base dimensions 620mm x 620mm
- Standard duty

4 Wheel Heavy Duty Drum Trolley, 220Kg (70201)



A heavy duty trolley suited for 180 - 220Kg drums, which includes brackets and accessories, and a reel mount position for use with dispensing kits.

- Suits 180 - 220Kg drums
- 2 fixed and 2 swivel wheels (1 swivel wheel braked)
- Includes gun & hose holding prongs
- Base dimensions 620mm x 620mm
- Position for hose reel to be fitted if required
- Heavy duty

Drum Lifting Clamp, 500Kg (DL500)



The easy way to move drums around with a forklift, this clamp simply fits over the top of the drum and grabs the drum as it is lifted.

- Suits 180 - 220Kg drums
- Maximum rated lifting weight, 500Kg

Drum Cradle, 220Kg (DC220P)



This drum cradle can clamp the drum in the upright position, then it is lowered into the horizontal position for moving and manual dispensing.

- Suits 50 - 220Kg drums
- Facilitates easy and safe drum handling
- Reduces the risk of spills and injury when doing manual dispensing from drum
- 2 fixed and 2 swivel wheels

Drum Lift Trolley, 300mm Lift (DLT300P)



This drum lifting trolley has a clamp beak which clamps onto the top lip of the drum, and the lower supporting bracket holds the drum in place during lifting and moving. An economic and effective tool for removing hazards involved with moving drums manually.

- Suits 180 - 220Kg drums
- Large front wheels with braked swivel wheel
- Lift height 300mm

Drum Lift Trolley, 600mm Lift (DLT600)



Where a forklift with a drum lifting clamp is not available, this drum lifting trolley is a must have to facilitate easy and safe loading and unloading of drums onto spill pallets.

This drum lifter avoids the need for bulky spill pallet loading ramps. The clamp beak grips the top lip of the drum and the lower support bracket holds the drum in position while off the ground.

- Suits 180 - 220Kg drums
- Large front wheels with braked swivel wheel
- Lift height 600mm

Oil Absorbent Pad with Dispenser Box (C-ABSP-01)



LUBE Pro
Professional Lubrication Equipment

A carton of absorbent pads specifically designed for cleaning up oil spills.

Carton forms a handy dispenser box, and each carton holds 200 pads.

- Pad dimensions - 400mm x 500mm
- Absorbency - 0.7L per pad
- Carton Quantity - 200 pads

Spill Response Kit for Oils, 120L (C-SRK120)



LUBE Pro
Professional Lubrication Equipment

120L Spill response kit for cleaning spills of hydrocarbons.

Spill Response Kit for Oils, 240L (C-SRK240)



LUBE Pro
Professional Lubrication Equipment

240L Spill response kit for cleaning spills of hydrocarbons.

Drum Heaters Drums, 230V



Improve the dispensing performance of oils and grease in cold weather by attaching these heater to drums.

- Suitable for steel drums only
- Runs on 230V single phase mains power supply
- Includes adjustable thermostat

Item No:	EDH55	EDH205
Suits Drum/Container Size:	60KG	220KG
Wattage:	700 watt	1200 watt

PVC Drum Cover & Pump Protector (C-DC200P)



A durable PVC cover over an aluminium frame designed to protect drums and pumps from the elements. It also stops water from pooling and dust build-up on the drum while in use.

- 40cm clearance above drum, providing height for the pump
- Securing buckle to clamp the drum
- Heavy duty PVC material
- Entry / exit points for hoses
- Can be supplied in your company colour and custom logo
- Hose and gun not included

Protective PVC Cover for Oil Drums (U-IBCCOV)



Protective cover for 1000L IBC's to protect the contents from the elements when stored in outdoor applications.

- Has a cutout for the valve in the base on the front of IBC
- Includes a 25mm slot up front face for level sighting
- Dimensions (LxWxH): 1225mm x 1020mm x 1000m

AIR & WATER EQUIPMENT



Retractable Air & Water Hose Reels

128

Enclosed Air & Water Hose Reels

128

Colour Packaged Air & Water Hose Reels

128

Professional Air & Water Hose Reels

129

Heavy Duty Double Arm Air & Water Hose Reels

129

Air Source Treatment

130

Air & Water Attachments & Fittings

132

Enclosed Air/Water Hose Reel, 3/8" x 10m (64510L)



Being an enclosed reel, this helps to maintain a tidy appearance in the workshop.

With a hose length of 10m, this air/water reel is well suited to most automotive workshop applications.

- Steel Construction
- Enclosed design
- Fixed based mounting (optional swivel base included)

Fluid or Medium Type:	Air / Water
Hose Size & Length:	3/8" x 10m
Outlet Connection:	3/8" BSPM
Max Operating Pressure:	20bar / 300psi
Duty:	Standard

Air/Water Hose Reels



Designed for moderate duty workshop applications, these are highly versatile reels which come with a separate swivel mounting bracket included meaning that this can be either fixed or swivel mounted.

- Steel Construction
- Hose guide rollers on all 4 sides gives smooth operation
- Colour packaged for retail sale

Item No:	AHR20-10	AHR20-12
Fluid or Medium Type:	Air / Water	Air / Water
Hose Size & Length:	3/8" x 20m	1/2" x 20m
Outlet Connection:	3/8" BSPM	1/2" BSPM
Max Operating Pressure:	10bar / 145psi	10bar / 145psi
Duty:	Standard	Standard

Professional Air/Water Hose Reels



LUBE Pro
Professional Lubrication Equipment

Designed for professional workshop applications, these are a highly versatile reels. With 15m of hose, these reels cover most standard workshop air or water dispensing applications.

- Steel Construction
- Hose guide rollers on all 4 sides gives smooth operation
- Black rubber hose
- Fixed base mounting

Item No:	64015L	64115L
Fluid or Medium Type:	Air / Water	Air / Water
Hose Size & Length:	3/8" x 15m	1/2" x 15m
Outlet Connection:	3/8" BSPM	1/2" BSPM
Max Operating Pressure:	20bar / 300psi	20bar / 300psi

Heavy Duty Double Arm Air/Water Hose Reels, 1/2" x 15m (64215LS)



LUBE Pro
Professional Lubrication Equipment

These heavy duty double arm air retractable hose reels are suited for heavy commercial and industrial air and water applications.

- Steel Construction
- Hose guide rollers on all 4 sides gives smooth operation
- Black rubber hose
- Swivel base mounting
- Spring retractable

Fluid or Medium Type:	Air / Water
Hose Size & Length:	1/2" x 15m
Outlet Connection:	1/2" BSPM
Max Operating Pressure:	20bar / 300psi
Base Mounting:	Swivel

Air Line Lubricator, 1/4" (MP10-IL)



Providing a very small amount of lubrication to pneumatic equipment is often all that is needed to ensure that the equipment has a long and trouble-free life. The oil coats the working components of the air motor in a thin layer of oil which aids smooth operation, and also repels moisture which may come through the compressed air line.

This lubricator amounts to a very economical insurance policy against equipment damage and premature failure.

- Provides lubrication to connected equipment (adjustable ratio)
- 1/4 inch ports
- Includes wall mount bracket

Related Product:

Air Tool Oil
(MP10-OIL01)



Item Type:	Atomised Lubricator
Port Size:	1/4" BSPF
Application:	Install near the pump or device inlet to lubricate the workings of connected equipment

Air Line Filter / Pressure Regulator, 1/4" (MP10-FR-AD)



One of the biggest killers of pneumatic equipment is moisture (condensate) in the incoming air supply. This is why a water trap filter is required very close to the inlet of the connected pneumatic equipment.

It is rarely enough protection to have a single water trap filter at the compressor, as this will only remove some of the moisture, and the colder the air is when it is flowing through the filter, the more effective the moisture removal will be. As the air is often warm when leaving the compressor, a lot of moisture gets through and then condenses in the air lines. Therefore, a filter such as this handy combination unit is usually required at the location of the pneumatic equipment.

- Supplies clean air to pneumatic equipment
- Reduces condensate content in compressed air
- Regulates air pressure supplied to equipment
- Includes wall mount bracket and 1/4" connecting nipple
- Auto drain valve prevents build up of water in filter bowl

Item Type:	Pressure Regulator & Moisture Filter
Port Size:	1/4" BSPF
Application:	Install near the pump or device air inlet to regulate air pressure & assist with removal of excess condensate

Air Line Filter / Pressure Regulator / Lubricator, 1/4" (MP10-FRL-AD)



Having a single product, offering moisture and particle removal, pressure regulation, and lubrication in the form of a very fine oil mist, this product is the ultimate form of affordable protection for connected equipment such as pneumatic pumps.

This unit allows pressure regulation of the downstream air line, as well as particle and moisture filtration.

- Best setup for protection of connected pneumatic equipment
- Reduces particle & condensate content in compressed air
- Provides lubrication to connected equipment (adjustable ratio)
- Regulates air pressure supplied to equipment
- Includes wall mount bracket and 1/4" connecting nipple.
- Auto drain valve prevents build up of water in filter bowl.

Related Product:

Air Tool Oil
(MP10-OIL01)



Item Type:	Pressure Regulator, Moisture Filter, Atomised Lubricator
Port Size:	1/4" BSPF
Application:	Install near the pump or device air inlet to regulate air pressure, assist with removal of excess condensate, and lubricate the workings of connected equipment

Air Line Filter / Pressure Regulator, 3/8" (MP15-FR-AD)



All air compressors which are not connected to an air dryer should have a pressure regulator and a water trap filter on the outlet, and also at low points in the workshop distribution piping, for the protection of the pipework, and the connected equipment.

This high flow unit is designed for fitting too small to medium sized compressors, or to pneumatic equipment which requires a high air flow.

- Supplies clean air to pneumatic equipment
- Reduces condensate and particle content in compressed air
- Regulates air pressure supplied to equipment
- 3/8 inch Ports
- Includes wall mount bracket
- Auto drain valve prevents build-up of water in filter bowl

Item Type:	Pressure Regulator & Moisture Filter
Port Size:	3/8" BSPF
Application:	Install near the compressor outlet to regulate air pressure & assist with removal of excess condensate to help avoid build up in air lines

Water Control Valve, 3/8" Inlet (O-2410564)



Designed especially for water dispensing applications in mechanical workshops, this water control valve makes the job easy and reduces the potential for spills.

- Robust unit with easy to use thumb trigger.
- Rubber outlet nozzle.
- 3/8" (10mm) female inlet connection.

Hex Nipple, 1/4" BSP (ALA14131)



Hex nipple with 1/4" BSP threads which is suited for connecting air filtration units to the air inlet of pneumatic pumps.



Right Angle Adapter, 1/4" BSP M/F (ALA14301)



90 Degree, 1/4" BSP adapter with M/F threads which is suited for connecting adapting the incoming air supply to suit various pneumatic pumps.



Air Quick Connector, 1/4" (ALA2608)



1/4" BSP quick plug for fast connection & disconnection of compressed air lines to pneumatic components.



FLUID MANAGEMENT SYSTEMS



Fluid Management Systems
Tank Level Alert Systems

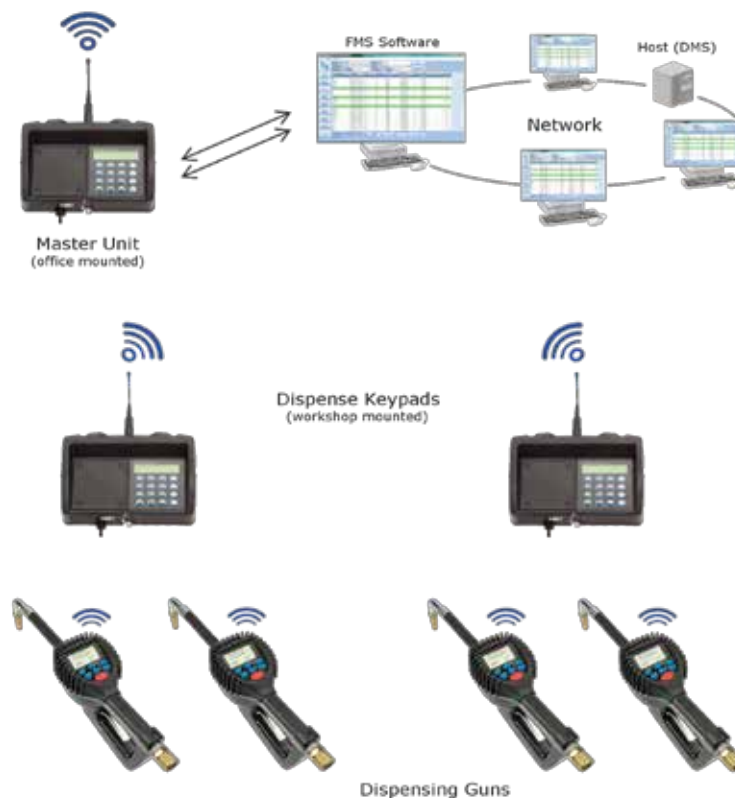
133
134

Badger Meter Wireless Fluid Management System



The pioneer in wireless oil dispensing management for mechanical workshops, Badger Meter's wireless fluid management system is jointly designed by US and German engineers, and is manufactured in the US. This system utilizes wireless communication between all system hardware components, and with the addition of a small interface program it can be integrated to a dealer management system which allows this system to check if a job/fleet number is correct and allow or refuse a dispense request accordingly. At the completion of the dispense it will make the dispense data available to the DMS to allow it to be imported directly to the relevant job or fleet number, thus removing manual data entry.

- Up to 250 users per system
- Up to 250 dispensing guns per system
- Up to 36 workshop keypads per system
- Dispensing guns are locked until a dispense is requested via a workshop keypad
- Dispense & tank level data is recorded in the system management software, providing full traceability
- 1 System can cover large sites with multiple workshops - even multiple sites for the same company, within close proximity
- Multiple systems can be administered from a single location with dispense data retrieval from all sites. The individual systems can be located anywhere as long as they have a LAN connection
- Highly functional system with many features making it suitable for a wide variety of different applications
- Used extensively throughout Europe, the Middle East, and North America



Tank Overflow Prevention System - Controller Warning (LAS-01L)



This system monitors holding tanks in applications such as workshop waste oil storage, and provides warning level and full level indications on the controller. The LAS-01L tank over flow prevention system includes a tank high level sensor, and electronic control box with LED indications when the tank sensor is triggered.

- Suitable for tank filling applications in many different industries
- Solid LED indication for Normal Operation, and flashing LED indication for High Level Warning, and Tank Full
- Built-in relay output interface allows this system to be integrated to other control systems
- 230V mains power supply

Tank Overflow Prevention System - Remote Warning (LAS-01FB)



Designed to prevent overflow of holding tanks by monitoring for full tank level, and providing strong visual warning via remote flashing light when tank is full. The LAS-01FB tank over flow prevention system includes a tank high level sensor, electronic control box with LED indications, and remote flashing light which provide visual warnings in multiple locations when the tank sensor is triggered.

- Suitable for tank filling applications in many different industries
- Controller has solid LED indication for Normal Operation, and flashing LED indication for High Level Warning, and Tank Full
- Remote warning light can be located in another part of the building from the controller to provide visual tank full indication
- Built-in relay output interface allows this system to be integrated to other control systems.
- 230V mains power supply

Tank Overflow Prevention System - Pump Cutoff (LAS-01)



This system is designed for preventing overflow of holding tanks in applications such as waste oil storage in workshops. A must have for avoiding over filling. The LAS-01 tank over-flow prevention system includes a tank high level sensor, electronic control box with LED indications, and an air shut-off solenoid valve.

- Controller has solid LED indication for Normal Operation, and flashing LED indications for High Level Warning, and Tank Full
- Compressed air supply to pneumatic pump will be switched off when tank is full. For workshop waste oil applications, the pneumatic pump sucks out the contents of the oil drain pans to the tank, so this pump will be disabled until the tank is emptied
- Also suitable for tank filling applications in many different industries
- 230V mains power supply



RETRACTABLE HOSE REELS



Colour Packaged Air & Water Reels	136
Lube Pro Enclosed Series	136
Lube Pro Single Arm Series	137
Lube Pro Double Arm, Fixed Mount Series	137
Lube Pro Double Arm, Swivel Mount Series	138
Lube Pro Heavy Duty Series	138
Orion Single Arm Series	139
Orion Heavy Duty Series	139
Meclube Heavy Duty Series	140
Meclube Reel Stands	140
Orion Reel Stands	141
Hose Reel Accessories	142

Lube Pro Colour Packaged Air / Water Series



Designed for moderate duty workshop applications, these are highly versatile reels which come with a separate swivel mounting bracket included meaning that this can be either fixed or swivel mounted.

- Steel Construction
- Hose guide rollers on all 4 sides gives smooth operation
- Colour packaged for retail sale

Item No:	AHR20-10	AHR20-12
Fluid or Medium Type:	Air / Water	Air / Water
Hose Size & Length:	3/8" x 20m	1/2" x 20m
Outlet Connection:	3/8" BSPM	1/2" BSPM
Max Operating Pressure:	10bar / 145psi	10bar / 145psi
Duty:	Standard	Standard

AIR & WATER EQUIPMENT

Enclosed Air/Water Hose Reel, 3/8" x 20m (64510L)

Lube Pro Enclosed Series



Being an enclosed reel, this helps to maintain a tidy appearance in the workshop.

- Steel Construction
- Enclosed design
- Fixed based mounting (optional swivel base included)

Item No:	62510L	64510L
Fluid or Medium Type:	Oil	Air / Water
Hose Size & Length:	1/2" x 10m	3/8" x 10m
Outlet Connection:	1/2" BSPM	3/8" BSPM
Max Operating Pressure:	160bar / 2320psi	20bar / 300psi
Duty:	Standard	Standard

Lube Pro Single Arm Series



Designed for professional workshop applications, these are a highly versatile reels. With 15m of hose, these reels cover most standard workshop air or water dispensing applications.

- Steel Construction
- Hose guide rollers on all 4 sides gives smooth operation
- Black rubber hose
- Fixed base mounting

Item No:	64015L	64115L
Fluid or Medium Type:	Air / Water	Air / Water
Hose Size & Length:	3/8" x 15m	1/2" x 15m
Outlet Connection:	3/8" BSPM	1/2" BSPM
Max Operating Pressure:	20bar / 300psi	20bar / 300psi
Duty:	Standard	Standard

AIR & WATER EQUIPMENT

Enclosed Air/Water Hose Reel, 3/8" x 10m (64015L)

Lube Pro Double Arm - Fixed Mount Series



These highly popular spring-retractable hose reels are excellent performers in many oil dispensing applications.

- Steel construction
- Spring retractable

Related Product:
Lube Pro Swivel Bracket (62015L-SB)
For Fixed Mount Reels



Item No:	61015L	62015L
Fluid or Medium Type:	Grease	Oil
Hose Size & Length:	1/4" x 15m	1/2" x 15m
Outlet Connection:	1/4" BSPM	1/2" BSPM
Max Operating Pressure:	400bar / 5800psi	160bar / 2320psi
Duty:	Standard	Standard

Lube Pro Double Arm - Swivel Mount Series



AIR / WATER EQUIPMENT

Enclosed Air/Water Hose Reel, 1/2" x 10m (64215LS)

These heavy duty double arm retractable hose reels are suited for heavy commercial and industrial applications.

- Spring retractable
- Steel Construction
- Hose guide rollers on all 4 sides gives smooth operation
- Swivel base mounting

Item No:	62015LS	64215LS
Fluid or Medium Type:	Oil	Air / Water
Hose Size & Length:	1/2" x 15m	1/2" x 15m
Outlet Connection:	1/2" BSPM	1/2" BSPM
Max Operating Pressure:	160bar / 2320psi	20bar / 300psi
Duty:	Heavy	Heavy

Lube Pro Heavy Duty Series

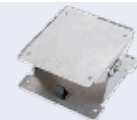


Heavy duty dispensing reels suitable for a range of commercial and industrial applications.

- Steel construction
- Spring retractable

Related Product:

Lube Pro Swivel Bracket (62025L-SB)
- Page 142



Item No:	62025L	63030L
Fluid or Medium Type:	Oil	Oil & Diesel
Hose Size & Length:	1/2" x 25m	1" x 30m
Outlet Connection:	1/2" BSPM	1" BSPM
Max Operating Pressure:	160bar / 2320psi	10bar / 145psi
Duty:	Heavy	Heavy

Orion Single Arm Reel Series



Very popular moderate duty spring retractable reels which are suited to many different dispensing applications.

- Aluminium & composite construction
- Spring retractable, single arm hose guide

Related Product:

Orion Swivel Bracket (O-28913)
- Page 142



Item No:	O-15212	O-15225	O-25232	O-25235
Fluid or Medium Type:	Grease	Grease	Oil	Oil
Hose Size & Length:	1/4" x 10m	3/8" x 15m	1/2" x 10m	1/2" x 15m
Outlet Connection:	1/4" BSPM	3/8" BSPM	1/2" BSPM	1/2" BSPM
Max Operating Pressure:	400bar / 5800psi	400bar / 5800psi	75 bar / 1090psi	75 bar / 1090psi
Base Mounting:	Fixed	Fixed	Fixed	Fixed

Orion Double Arm Reel Series



These auto-retract heavy duty dispensing reels are one of the most robust products of this class on the market.

- Very sturdy steel construction
- Spring retractable, easy adjustable arm guide

Related Product:

Orion Swivel Bracket (O-28913)
- Page 142



Item No:	O-15125	O-25132	O-25135
Fluid or Medium Type:	Grease	Oil	Oil
Hose Size & Length:	3/8" x 15m	1/2" x 10m	1/2" x 15m
Outlet Connection:	3/8" BSPM	1/2" BSPM	1/2" BSPM
Max Operating Pressure:	400bar / 5800psi	75 bar / 1090psi	75 bar / 1090psi
Base Mounting:	Fixed	Fixed	Fixed

Meclube Heavy Duty Series



These heavy duty double arm retractable hose reels are suited for heavy commercial and industrial applications.

- Galvanised connection
- 90 Degree swivel joint
- Polyurethane seals
- Fixed base mounting

Item No:	M-0701407325	M-0701506600
Fluid or Medium Type:	Grease	Oil
Hose Size & Length:	3/8" x 25m	Bare (Up to 15m 1")
Outlet Connection:	3/8" BSPM	1" BSPM
Max Operating Pressure:	400bar / 5800psi	160bar / 2320psi
Duty:	Heavy	Heavy

AIR & WATER EQUIPMENT

Enclosed Air/Water Hose Reel, 3/8" x 25m (M-0701407325)

Medium Duty Reel Stands - Meclube



Service stands ideal for light and medium commercial, industrial and automatic applications.

- Robust design
- Grated basin included for picking up oil drops

Item No:	M-0231963	M-0231964
Number of Reels:	Up to 4	Up to 6
Dimensions:	2500x1113x500mm	2500x1550x500mm

Medium Duty Reel Stands - Orion



Service stands ideal for light commercial, industrial and automatic applications.

- Grey laquered steel
- Pre-drilled holes to suit orion series reels

Item No:	O-92173	O-92175
Number of Reels:	Up to 3	Up to 5
Dimensions:	2200x1200x400mm	2200x1750x400mm

AIR 8

Endo

10L

Heavy Duty Reel Stands - Orion (O-92190)



Service stands ideal for heavy commercial, industrial and automatic applications.

- Grey laquered steel
- Pre-drilled holes to suit orion series reels
- Drip tray included

Related Product:

Bracket for 2 extra hose reels (O-92195)



Number of Reels:	Up to 6
Dimensions:	2600x1543x760mm

Swivel Mount Bracket (62015L-SB)



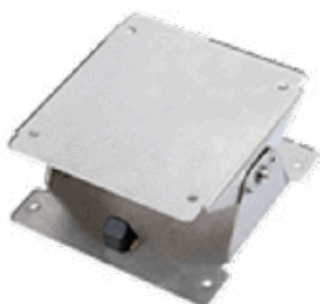
Suitable For:

61015L 62015L
64015L 64115L



Swivel bracket to suit Lube Pro fixed mount reel 62015L for applications where the reel needs to swivel from side to side.

Swivel Mount Bracket (62025L-SB)



Suitable For:

1/2" 25m Lube Pro Oil Reel
62025L



Swivel bracket to suit Lube Pro fixed mount reel 62025L for applications where the reel needs to swivel from side to side.

Swivel Mount Bracket (O-28913)



Suitable For:

O-15125 O-15212
O-25132 O-25135
O-25232 O-25235



Swivel bracket to suit Orion fixed mount reels for applications where the reel needs to swivel from side to side.



Innovative Fluid Handling Solutions



Follow Us:



LinkedIn



Facebook



Advance
FLUID CONTROL

0800 538 058

sales@advancefc.co.nz

www.advancefluidcontrol.co.nz